

**Cisco SFS 3012 Multifabric Server Switch
Hardware Guide (Topspin 360 Hardware Guide)
Web Release v2.1.0**

Copyright © 2004 - 2005 Topspin Communications, Inc. All rights reserved.

The Topspin Server Switch, Topspin Host Channel Adapter, Topspin Element Manager, and collateral software programs and documentation are subject to and made available only pursuant to the license agreement signed by you and Topspin, Communications, Inc. (or if no signed license agreement exists, the license agreement included with your original media) and may only be used in accordance with the terms of that agreement. Making copies, modifications, or compilation works of the software except as specifically allowed in that agreement is prohibited by law and constitutes a punishable violation of the law. This documentation may not be copied, modified or reduced to any electronic or machine-readable form without Topspin Communication, Inc.'s prior written consent.

As defined in FAR section 2.101, DFAR section 252.227-7014(a)(1) and DFAR section 252.227-7014(a)(5) or otherwise, the collateral software programs provided to you are "commercial items," "commercial computer software" and/or "commercial computer software documentation." Consistent with DFAR section 227.7202, FAR section 12.212 and other sections, any use, modification, reproduction, release, performance, display, disclosure or distribution thereof by or for the U.S. Government shall be governed solely by the terms of the license agreement and shall be prohibited except to the extent expressly permitted by the terms of that agreement. Any technical data provided that is not covered by the above provisions shall be deemed "technical data-commercial items" pursuant to DFAR section 227.7015(a) or equivalent. Any use, modification, reproduction, release, performance, display or disclosure of such technical data shall be governed by the terms of DFAR section 227.7015(b) or equivalent.

This documentation may include technical inaccuracies or typographical errors and is subject to correction and other revision without notice. TOPSPIN PROVIDES THIS DOCUMENTATION "AS IS" AND WITHOUT ANY WARRANTIES OF ANY KIND, EITHER EXPRESS OR IMPLIED, INCLUDING BUT NOT LIMITED TO THE IMPLIED WARRANTIES OF MERCHANTABILITY OR FITNESS FOR A PARTICULAR PURPOSE. Some states or jurisdictions do not allow disclaimer of express or implied warranties in certain transactions; therefore, this statement may not apply to you.

©Copyright 2004, Topspin Communications, Inc. All rights reserved. Topspin is a registered trademark and the Topspin logo, TopspinOS, and Topspin Server Switch are trademarks of Topspin Communications, Inc. Other company, product, or service names are the property of their respective owners.

Document Version: Web Release

Part Number: OL-7722-01

Product ID: 140262

April, 2005

Printed in the United States of America.

Contents

Regulatory Notices	vii
FCC Statement	vii
Safety Information	vii
Electrical Cautions	vii
General Cautions	ix
Laser Cautions	ix
Contact Information	x
1: Product Registration.....	xi
THANK YOU FOR PURCHASING YOUR TOPSPIN® PRODUCT!	xi
2: Standard Product Agreement.....	xiii
3: Topspin 360 Overview	1
Introduction.....	1
Features	2
Performance	2
Unified Fabric	2
Transparent Topology	2
Redundancy and High-Availability	3
Scalability	3
4: Topspin 360 Components	5

Introduction.....	5
Controller Cards.....	6
Install a Controller Card	6
Ethernet and Fibre Channel Gateways.....	9
Replacing and Updating Your Gateways.....	9
Install an Ethernet or Fibre Channel Gateway.....	10
InfiniBand Switch Cards.....	10
Install InfiniBand Switch Cards.....	11
Remove InfiniBand Switch Cards	13
Power Supply Modules.....	13
Install Power Supply Modules.....	14
Removing a Power Supply	15
Blower Trays.....	15
Install Blower Trays.....	15
Removing Blower Trays.....	16

5: Install and Boot the Topspin 360..... 19

Introduction.....	19
Prepare the Site for the Topspin 360.....	19
Read the Cautionary Statements	20
Prepare the Physical Environment for the Topspin 360	20
Install Topspin 360 Components	20
Rack the Topspin 360	20
Attach a Serial Console Cable to a PC or Terminal.....	26
Boot your Topspin 360 and Configure Basic Connectivity.....	27
Assign a Static IP Address.....	27
Obtain an IP Address with DHCP	28
Connect InfiniBand Hosts.....	29
Manage the Topspin 360.....	32
Viewing and Updating the Software Image on the Chassis.....	33
View the Software Image Version with the CLI	33
View the Software Image Version with the GUI.....	34
Upgrade the Software Image with the CLI.....	35
Upgrade the Software Image with the GUI	36
Delete an Image with the CLI.....	38
Delete an Image with the GUI	39

6: Topspin 360 Field Replaceable Units 41

Controller Cards.....	41
Expansion Modules.....	41
InfiniBand Switch Cards.....	42
Installing an InfiniBand Switch Card	42
Configuring a New InfiniBand Switch Card	42
Removing an InfiniBand Switch Card.....	44
Power Modules	44

Installing a Power Supply	44
Removing a Power Supply	45
Replacing Blower Trays	46
Installing a Blower Tray	46
Removing a Blower Tray	47

7: Topspin 360 LEDs..... 49

Introduction.....	49
Topspin 360 System LED.....	50
Power Supply LEDs.....	51
Blower Tray LEDs.....	52
Controller Card LEDs.....	53
IB Switch Card LEDs	54
IB Port LEDs	54
Fibre Channel Gateway LEDs	55
FC Port LEDs.....	55
Ethernet Gateway LEDs	56
Ethernet Port LEDs.....	56

8: Specifications and Compliance 57

General Specifications	57
Electrical Specifications.....	58
Certifications/Regulatory.....	58
Laser Specs	58

Regulatory Notices

FCC Statement

This equipment has been tested and found to comply with the limits for a Class A digital device, pursuant to Part 15 of the FCC Rules. These limits are designed to provide reasonable protection against harmful interference when the equipment is operated in a commercial environment. This equipment generates, uses, and can radiate radio frequency energy and, if not installed and used in accordance with the instruction manual, may cause harmful interference to radio communications. Operation of this equipment in a residential area is likely to cause harmful interference in which case the user will be required to correct the interference at his own expense.

Safety Information

- [“Electrical Cautions” on page vii](#)
- [“General Cautions” on page ix](#)
- [“Laser Cautions” on page ix](#)

Electrical Cautions



CAUTION: Use only the power cable provided with your Topspin 360. Inspect the power cord and determine if it provides the proper plug and is appropriately certified for use with your electrical system. Discard the cord if it is inappropriate for your country’s electrical system and obtain the proper cord, as required by your national electrical codes or ordinances.



CAUTION: Grounding is supplied by the ground-prong on the 3-prong power cable. Do not attach a separate ground cable. Do not use adapter plugs. Do not remove the ground prong from the cable. Ensure the ground connection on the power supply is correct and functioning before applying power to the Topspin 360.



CAUTION: Always ground yourself before touching any internal Topspin 360 component to avoid damage from electrostatic discharge (ESD).



CAUTION: The Topspin 360 has two power cables. The operator must disconnect all power cables before attempting to remove the Topspin 360 from the rack.



CAUTION: Remove power cables by grasping the cable connector and pulling straight out. If the chassis comes equipped with a power-plug retainer, move the bail wire used to retain the plug to the side before attempting to remove the power plug. To replace power-supply cables, grasp the cable connector, align the connector with the power jack, and insert the connector straight into the jack. If the chassis comes equipped with a power-plug retainer, move the bail wire back into place to keep the power plug firmly in place.



CAUTION: The Topspin 360 contains lithium batteries. Do not attempt to replace or discard these batteries. The batteries may only be serviced by Topspin service personnel.



CAUTION: Observe and follow service markings. Do not service the Topspin 360, except as explained in the Topspin documentation supplied with your Topspin 360. Opening the chassis or removing the enclosure cover exposes you to electrical shock and may damage Topspin 360 components.

If one or more of the following situations occurs, remove power to the Topspin 360 and contact your Topspin support representative:

- The power cable or power plug is damaged.
- The Topspin 360 has been exposed to water.
- The Topspin 360 has been dropped or damaged in any way.
- The Topspin 360 does not operate correctly after following the installation instructions.



CAUTION: You must ensure the operating environment has adequate air circulation. Keep the Topspin 360 in a cool, well-ventilated room. Do not block cooling vents. Install filler panels into all unused slots.



CAUTION: Use only Topspin-approved gateway expansion modules, controller cards, fans, and power supply modules.



CAUTION: Never place your hand inside an empty card or module bay. You should never have cause to place a hand anywhere inside the Topspin chassis. Unused card and module bays should always have a Topspin cover over the bay to ensure proper safety, ventilation, and cooling.



CAUTION: The Topspin 360 contains hot-swappable controller, fan/blower tray, switch controller, power supply, and gateway expansion modules. The operator may swap these components while power is still applied to the Topspin 360.

General Cautions



CAUTION: No user is authorized to remove the Topspin 360 enclosure cover. The internal chassis contains no user-serviceable components. Removing the enclosure cover voids your warranty. See the warranty card for further details regarding the servicing of your chassis.



CAUTION: Opening and/or modifying expansion and system modules may void your warranty. Refer to your warranty to determine access restrictions.

In general

- Do not spill food or liquids on your Topspin 360 components.
- Protect your Topspin 360 from sudden power-surges and interruptions by using a surge suppressor, line conditioner, or uninterruptible power supply (UPS).
- Place cables appropriately so that they do not obstruct any egress within the data center and they do not block any ventilation inlets or outlets.
- Rack mount the Topspin chassis according to the rack manufacturer recommendations.



CAUTION: Installing the Topspin 360 into a rack is a 3-person process due to the weight and size of the 4U unit.

Laser Cautions



CAUTION: Only qualified service technicians should repair laser devices.



CAUTION: Only open, modify, or service laser devices as specified in the manufacturer documentation.



CAUTION: Use of controls or adjustments or performance of procedures other than those specified herein may result in hazardous laser radiation exposure.

Laser Specs

Table iii-1:

Topspin P/N	Application	Optical Parameters
48-00001-01	Fibre Channel	*CDRH/IEC Laser Class: 1/1 Maximum Data Rate: 2.125 GB/s Wavelength: 850nm I/O connector:
* Standards used: CDRH - 21CFR Chapter I §1040.10; IEC - IEC60825-1:1994		

Contact Information

Table iii-2: Customer Contact Information

Address	Topspin Communications, Inc. 515 Ellis St. Mountain View, CA 94043
Telephone, Corporate Headquarters	(866) TOPSPIN or (650) 316-3300
Fax	(650) 316-3269
Telephone, Technical Support	(800) 499-1473
Email, Technical Support	support@topspin.com
Web site, Support	http://support.topspin.com

Product Registration

THANK YOU FOR PURCHASING YOUR TOPSPIN® PRODUCT!

Topspin Communications is pleased that you have selected Topspin for your computing infrastructure. Topspin provides comprehensive customer support resources via telephone and Web access.

Topspin's Customer Support Web site has the latest TopspinOS (IB Switch and I/O Chassis Operating System), Linux and Windows Host Side Drivers, Boot over InfiniBand Firmware and technical documentation. Topspin recommends that you download the latest Topspin software and documentation from the Topspin support web site so that you can take full advantage of the latest capabilities.

Registration Benefits

Customers must register on-line to receive the following benefits:

- Software updates and downloads
- Product warranty support
- Customer service and support
- Product documentation

Registration Instructions

Please immediately follow the instructions below to register yourself as a Topspin user:

1. Go to <http://support.topspin.com>
2. Click the “**Register Now**” link below the customer login prompt
3. Enter at least one of your product serial numbers in the spaces provided. Each serial number must be entered exactly as it appears on the product label, including dashes.
4. Enter your contact information in the spaces provided.

User Name and Password

Once you register, Topspin will provide you with a user name and password to access the secure customer support Web site. You may also contact Topspin customer support at:

- Email: support@topspin.com

- Phone: (800) 499-1473
- Online Help Desk: <http://support.topspin.com>

Standard Product Agreement

PLEASE READ THESE TERMS AND CONDITIONS CAREFULLY BEFORE USING THE PRODUCTS THAT ARE PROVIDED WITH THIS AGREEMENT. BY USING ANY PRODUCTS, YOU ACKNOWLEDGE THAT YOU HAVE READ AND UNDERSTOOD ALL THESE TERMS AND CONDITIONS AND YOU WILL BE CONSENTING TO BE BOUND BY THEM. IF YOU DO NOT ACCEPT THESE TERMS AND CONDITIONS, DO NOT USE THE PRODUCTS AND RETURN PRODUCTS WITHIN 30 DAYS UNUSED IN THE ORIGINAL SHIPPING CONTAINER TO THE PLACE OF PURCHASE FOR A FULL REFUND.

- 1. General.** These terms and conditions (“Agreement”) shall apply to all quotations made and products shipped by Topspin Communications, Inc. (“Products”) to Customer. Customer's acceptance of such quotations or Product shipments is expressly limited to the terms and conditions of this Agreement. Any additional or different terms or conditions in any communication by Customer (whether in a purchase order or otherwise) are hereby rejected and shall be null and void, irrespective of the means of Customer's acceptance. Any failure by Topspin Communications, Inc. (“Topspin”) to object to any additional or different provisions proposed by Customer shall not constitute a waiver of these terms and conditions, nor constitute acceptance of any such Customer's terms and conditions. All orders or contracts must be approved and accepted by Topspin at its home office at 515 Ellis Street, Mountain View, CA 94043. This Agreement shall be applicable whether or not they are attached to or enclosed with the Products. Topspin may deliver Products in partial shipments and such partial shipments may be invoiced individually. Customer may cancel submitted purchase orders only with the prior written consent of Topspin.
- 2. Prices/Taxes.** All prices are exclusive of shipping, insurance and installation charges, all of which are Customer's sole responsibility. All prices are exclusive of all sales, use, excise, value added, withholding and other taxes, and all customs duties and tariffs now or hereafter claimed or imposed by any governmental authority upon the sale of Products. Any such charges will be added to the price or subsequently invoiced to the Customer. In the event Topspin is required to pay any such tax, duty or charge, Customer will promptly reimburse Topspin.

3. **Payment/Financing.** Topspin will determine Customer's credit terms on a per-order basis and such terms are subject to a credit review and approval by Topspin in its sole discretion. The amount of credit may be changed or credit withdrawn by Topspin at anytime in its sole discretion. All payments shall be made in U.S. Dollars net thirty (30) days from the date of invoice unless otherwise stated by Topspin in writing. Any amounts not paid when due will accrue interest at the rate of 1 1/2% per month, or the maximum amount allowed by law, if lower. In the event that any payment is more than thirty (30) days late, Topspin shall have the right to suspend performance until all payments are made current. Customer shall pay for all costs (including reasonable attorneys' fees) incurred by Topspin in connection with the collection of late payments. Each accepted purchase order is a separate, independent transaction, and Customer has no right of set-off against other purchase orders or other transactions with Topspin. Customer hereby grants Topspin a security interest in the Products in the amount of the unpaid balance of the purchase price until paid in full. Topspin may file a financing statement for such security interest and Customer shall sign any such statements or other documentation necessary to perfect Topspin's security interest.
4. **Software License.** (a) "Software" means Topspin's computer programs Products, in object code format, including without limitation firmware, delivered hereunder, whether incorporated in the hardware Products or delivered separately, and whether or not there is a separate charge therefor. The term "Software" shall also include any other new features, functionality or enhancements to the Software provided to Customer. All references to the "purchase," "sale" of or "selling" Software shall mean the granting of a license to use such Software. (b) Subject to the terms and conditions of this Agreement, Topspin hereby grants Customer a non-exclusive, non-transferable, non-sublicensable license to use the Software (in object code form only) solely in accordance with the accompanying documentation for the internal business purposes of Customer. (c) Except as expressly provided in this Agreement, The license set forth above does not include any rights to and Customer shall not (i) reproduce, modify, translate or create any derivative work of all or any portion of the Products, (ii) sell, rent, lease, loan, provide, distribute or otherwise transfer all or any portion of the Software, (iii) reverse engineer, reverse assemble or otherwise attempt to gain access to the source code of all or any portion of the Products, (iv) use the Software for third-party training, commercial time-sharing or service bureau use, (v) remove, alter, cover or obfuscate any copyright notices, trademark notices or other proprietary rights notices placed or embedded on or in the Products, (vi) unbundle any component of the Products, or (vii) cause or permit any third party to do any of the foregoing. (d) If Customer is a European Union resident, Customer acknowledges that information necessary to achieve interoperability of the Software with other programs is available upon request. (e) Customer may make a single copy of standalone Software solely for its back-up purposes; provided that any such copy is the exclusive property of Topspin and its suppliers and includes all copyright and other intellectual property right notices that appear on the original. (f) Customer shall have the right to transfer the Software that is embedded in hardware Products in connection with a transfer of all of Customer's right, title and interest in such hardware Products to a third party; provided, that, Customer transfers the such Software and any copies thereof subject to, and such third party agrees in writing to be bound by, all the terms and conditions of this Agreement. (g) Customer acknowledges that the Software contains or is provided with copyrighted software of Topspin's suppliers as identified in associated documentation or other printed or electronic materials ("Third Party Software") which are obtained under a license from such suppliers. Customer's use of any Third Party Software shall be subject to and Customer shall comply with the applicable restrictions and other terms and conditions set forth in the such documentation or materials.
5. **Title/Risk of Loss/Acceptance.** All sales are made F.O.B. point of shipment at Topspin's designated manufacturing facility, and Topspin's title to the Products (except for Software) and the risk of loss of or damage to the Products ordered by the Customer will pass to Customer at time of Topspin's delivery of Products to the carrier. The carrier shall be deemed Customer's agent, and any claims for damages in shipment must be filed with the carrier. Topspin is authorized to designate a carrier pursuant to Topspin's standard shipping practices unless otherwise specified in writing by Customer. All Products shall automatically be deemed accepted upon receipt by Customer. Customer must provide written notice to Topspin within thirty (30) days of delivery in the event that Products do not conform to the quotation made by Topspin.

6. **Intellectual Property Rights.** Title to and ownership of the Software and any associated documentation, and any improved, updated, modified or additional parts thereof, and all copyright, patent, trade secret, trademark and other intellectual property rights embodied in the Products, shall at all times remain the property of Topspin or Topspin's licensors. All suggestions or feedback provided by Customer or its employees or agents to Topspin with respect to the Products shall be Topspin's property and deemed confidential information of Topspin.
7. **Force Majeure.** Shipping dates are approximate and may be delayed absent prompt receipt from Customer of all necessary information. Topspin shall not be responsible for any failure to perform or delay attributable in whole or in part to any cause beyond its reasonable control, including but not limited to Acts of God, government actions, war, civil disturbance, insurrection, sabotage, labor shortages or disputes, failure or delay in delivery by Topspin's suppliers or subcontractors, transportation difficulties, shortage of energy, raw materials or equipment, or Customer's fault or negligence. In the event of any such delay the date of delivery shall, at the request of Topspin, be deferred for a period equal to the time lost by reason of the delay.
8. **Indemnity.** (a) Topspin shall defend Customer against any third party action alleging that the Products infringes any valid U.S. patent or copyright, and Topspin shall pay all settlements entered into, and all final judgments and costs (including reasonable attorneys' fees) awarded against Customer in connection with such action. If any Product, or parts thereof, becomes, or in Topspin's opinion may become, the subject of an infringement claim, Topspin may, at its option, (i) procure for Customer the right to continue using such Products, (ii) modify or replace such Products with substantially equivalent non-infringing products, or (iii) require the return of such Products and refund to Customer a pro-rata portion of the purchase price of such Products based on a three-year straight line amortization of the purchase price. (b) Topspin shall have no indemnification obligations with respect to any third party action alleging that (i) the use of any Products, or any part thereof, in combination with products not supplied by Topspin, or (ii) any service or other process utilizing any Products, or any part thereof, infringes any third party intellectual property right, and in such event Customer shall defend Topspin, and its officers, directors and employees, against any such action, and Customer shall pay all settlements entered into, and all final judgments and costs (including reasonable attorneys' fees) awarded against such party in connection with such action. (c) Each party's indemnification obligations shall be subject to the indemnified party (i) notifying the indemnifying party promptly in writing of such action, (ii) giving the indemnifying party exclusive control and authority over the defense or settlement of such action, (iii) not entering into any settlement or compromise of any such action without the indemnifying party's prior written consent and (iv) providing all reasonable assistance to the indemnifying party (provided that the indemnifying party reimburses the indemnified party for its out-of-pocket expenses incurred in providing such assistance). (d) THIS SECTION 8 STATES THE ENTIRE LIABILITY OF TOPSPIN FOR ANY INFRINGEMENT OF INTELLECTUAL PROPERTY RIGHTS.
9. **Limited Warranty and Disclaimer.** Any limited warranty for the Products and Topspin's sole and exclusivity liability thereunder is as set forth in Topspin's standard warranty documentation. Notwithstanding anything herein or otherwise to the contrary, Topspin makes no warranty with respect to any third party hardware or software products provided under this Agreement. Customer's sole remedy with respect to such third party products shall be pursuant to the original licensor's warranty, if any, to Customer, to the extent permitted by the original licensor. EXCEPT FOR ANY EXPRESS LIMITED WARRANTIES FROM TOPSPIN IN SUCH DOCUMENTATION, THE PRODUCTS ARE PROVIDED "AS IS", AND TOPSPIN AND ITS SUPPLIERS MAKE NO WARRANTY, EXPRESS, IMPLIED, STATUTORY OR OTHERWISE, WITH RESPECT TO PRODUCTS OR ANY PART THEREOF, INCLUDING WITHOUT LIMITATION ANY IMPLIED WARRANTY OF MERCHANTABILITY, FITNESS FOR A PARTICULAR PURPOSE, NONINFRINGEMENT, OR THOSE ARISING FROM COURSE OF PERFORMANCE, DEALING, USAGE OR TRADE. NEITHER TOPSPIN NOR ANY OF ITS SUPPLIERS WARRANT THAT THE PRODUCTS OR ANY PART THEREOF WILL MEET CUSTOMER'S REQUIREMENTS OR BE UNINTERRUPTED, OR ERROR-FREE, OR THAT ANY ERRORS IN THE PRODUCTS WILL BE CORRECTED. SOME STATES/JURISDICTIONS DO NOT ALLOW THE EXCLUSION OF IMPLIED WARRANTIES SO THE ABOVE EXCLUSIONS MAY NOT APPLY TO CUSTOMER. TOPSPIN'S LIMITED WARRANTY GIVES CUSTOMER SPECIFIC LEGAL RIGHTS. CUSTOMER MAY ALSO

HAVE OTHER RIGHTS, WHICH VARY FROM STATE/JURISDICTION TO STATE/JURISDICTION.

10. **Confidentiality.** “Confidential Information” means any oral, written, graphic or machine-readable information disclosed by Topspin that is designated in writing to be confidential or proprietary or should be reasonably understood to be confidential. Customer agrees to: (a) refrain from using Confidential Information except as necessary to exercise its rights herein and (b) use best efforts preserve and protect the confidentiality of the Confidential Information. Notwithstanding the foregoing, Confidential Information shall not include information: (i) already publicly known; (ii) otherwise known to Customer through no wrongful conduct, or (iii) to the extent required to be disclosed by law or court order.
11. **Limitation of Liability.** IN NO EVENT SHALL TOPSPIN OR ITS SUPPLIERS BE LIABLE TO CUSTOMER OR ANY THIRD PARTY FOR COSTS OF PROCUREMENT OF SUBSTITUTE PRODUCTS OR SERVICES, LOST PROFITS, DATA OR BUSINESS, OR FOR ANY INDIRECT, SPECIAL, INCIDENTAL, EXEMPLARY OR CONSEQUENTIAL DAMAGES OF ANY KIND ARISING OUT OF OR IN CONNECTION WITH THIS AGREEMENT, HOWEVER CAUSED AND ON ANY THEORY OF LIABILITY (WHETHER IN CONTRACT, TORT (INCLUDING NEGLIGENCE), STRICT LIABILITY OR OTHERWISE). TOPSPIN'S TOTAL AND CUMULATIVE LIABILITY ARISING OUT OF OR IN CONNECTION WITH ANY PRODUCTS PURCHASED BY CUSTOMER HEREUNDER SHALL IN NO EVENT EXCEED THE PURCHASE PRICE PAID BY CUSTOMER FOR SUCH PRODUCTS. THE TOPSPIN OR ITS SUPPLIERS HAVE BEEN ADVISED OF THE POSSIBILITY OF SUCH DAMAGES, AND NOTWITHSTANDING ANY FAILURE OF ESSENTIAL PURPOSE OF ANY LIMITED REMEDY.
12. **Termination.** If either party breaches a material provision of this Agreement and fails to cure such breach within thirty (30) days after receiving written notice of the breach, the non-breaching party shall have the right to terminate this Agreement at any time. Customer's breach of a payment obligation constitutes a default the date the payment is due and Topspin shall have the right to terminate this Agreement immediately. Either party may terminate this Agreement, effective immediately upon written notice, if the other party becomes the subject of a voluntary or involuntary petition in bankruptcy or any proceeding relating to insolvency, receivership, liquidation or composition for the benefit of creditors. In the event that a party terminates this Agreement pursuant to this Section, (i) the terms and conditions of this Agreement shall apply to all Products shipped prior to the date of termination of this Agreement, and (ii) orders for Products which have not been shipped as of the date of termination may be terminated at the option of the party terminating this Agreement.
13. **Export Control.** Customer acknowledges and agrees that the Products provided under this Agreement may be subject to restrictions and controls imposed by the United States Export Administration Act and the regulations thereunder. Customer warrants that it will not export or re-export any Products provided under this Agreement into any country in violation of such controls or any other laws, rules or regulations of any country, state or jurisdiction.
14. **Government Restricted Rights.** As defined in FAR section 2.101, DFAR section 252.227-7014(a)(1) and DFAR section 252.227-7014(a)(5) or otherwise, the Software and associated documentation are “commercial items,” “commercial computer software” and/or “commercial computer software documentation.” Consistent with DFAR section 227.7202, FAR section 12.212 and other sections, any use, modification, reproduction, release, performance, display, disclosure or distribution thereof by or for the U.S. Government shall be governed solely by the terms of this Agreement and shall be prohibited except to the extent expressly permitted by the terms of this Agreement.
15. **Miscellaneous.** This Agreement is governed and interpreted in accordance with the laws of the State of California, U.S.A. without reference to conflicts of laws principles and excluding the United Nations Convention on Contracts for the Sale of Goods. The parties consent to the exclusive jurisdiction of, and venue in, Santa Clara County, California, U.S.A. Customer shall not transfer, assign or delegate this Agreement or any rights or obligations hereunder, whether voluntarily, by operation of law or otherwise, without the prior written consent of Topspin (except as expressly set forth in Section 4(f)). Topspin may assign this Agreement to any successor by way of merger,

acquisition or sale of all or substantially all of assets relating to this Agreement. Topspin or any successor may assign all or part of the right to payments under this Agreement. Any assignment or transfer of this Agreement made in contravention of the terms hereof shall be null and void. Subject to the foregoing, the terms and conditions of this Agreement shall be binding upon and inure to the benefit of the parties to it and their respective heirs, successors, assigns and legal representatives. This Agreement constitutes the entire agreement between the parties with respect to the subject matter hereof, and merges all prior negotiations and drafts of the parties with regard thereto. No modification, addition or deletion, or waiver of any of the terms and conditions of this Agreement shall be binding on Topspin unless made in a non-preprinted agreement clearly understood by both parties to be a modification or waiver, and signed by a duly authorized representative of Topspin. If any of the provisions of this Agreement is held by a court of competent jurisdiction to be invalid or unenforceable under any applicable statute or rule of law, such provision shall, to that extent, be deemed omitted. All notices permitted or required under this Agreement shall be in writing and shall be delivered in person or mailed by first class, registered or certified mail, postage prepaid.

Topspin 360 Overview

The following sections appear in this chapter:

- [“Introduction” on page 1](#)
- [“Features” on page 2](#)

Introduction

The Topspin 360 Server Switch provides data center managers with a high-performance, low-latency interconnect that runs Fibre Channel and Ethernet traffic transparently over an InfiniBand (IB) backplane. [Figure 1-1](#) displays the front of the Topspin 360 Server Switch (with the bezel on).



Figure 1-1: Topspin 360 Chassis - Front View (Bezel End)

Figure 1-2 displays the back of the Topspin 360 Server Switch and numbers the slots on the chassis.

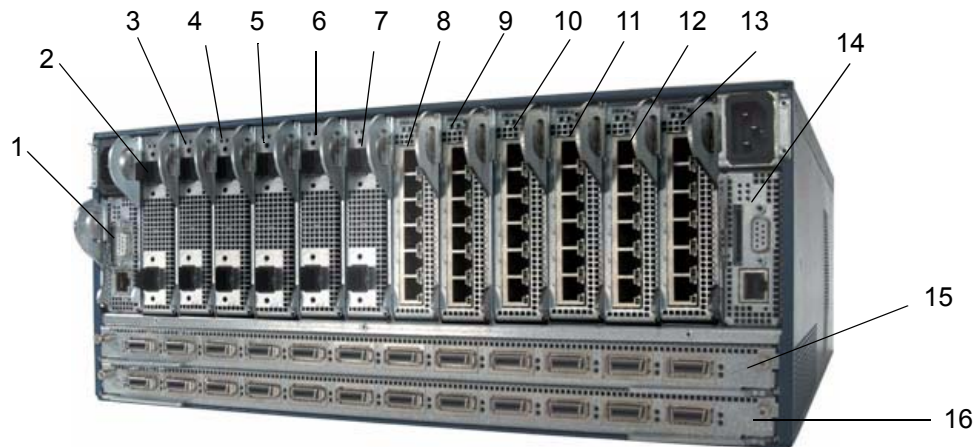


Figure 1-2: Topspin 360 Chassis - Back View (Service End) with Slot Numbers

The vertical slots at the top of the service end of the Topspin 360 are numbered 1 to 14 from left to right. The horizontal slots at the bottom of the service end of the chassis are numbered 15 to 16 from top to bottom. Field replaceable units (FRUs) with interfaces populate the service side of the chassis. FRUs such as power supplies and blower modules populate the front of the chassis, behind the bezel.

Features

The Topspin 360 provides unprecedented levels of availability, scalability, and manageability for deploying server clusters and on-demand computing. Switch modules provide up to a terabit of internal bandwidth, and Ethernet or Fibre Channel field-replaceable interface cards enable up to 72 ports of Fibre Channel, Ethernet, and InfiniBand interfaces in a single chassis.

Performance

Expressly designed to apply networking principles to computing problems, the Topspin 360 uses a switched InfiniBand fabric to interconnect server resources at 10 Gbps speeds. The combination of high bandwidth and low latency allows resources to be disaggregated and dynamically reassembled without the limits of the shared PCI bus.

Unified Fabric

The Topspin 360 integrates storage, server, and networking I/O into one unified fabric. With only one interface card in each host, you can manage all resources on one fabric and eliminate the need to install and manage multiple Ethernet, Fibre Channel, and inter-process communications (IPC) cards. The Topspin 360 aggregates and load balances all types of I/O, significantly reducing the number of managed ports in your environment and increasing availability.

Transparent Topology

Based on the Topspin Transparent Topology architecture, the Topspin 360 creates virtual IP and Fibre Channel interfaces on every server, allowing existing IP and storage area network (SAN) resources to seamlessly extend to server clusters. Using Fibre Channel gateways, SAN management technologies can “see” each individual node, enabling critical storage management and security models, such as Fibre Channel fabric zoning and storage-based LUN zoning. By adding Ethernet gateways, IT managers can also enable full IP connectivity, extending the value of server clusters to the rest of the enterprise.

Redundancy and High-Availability

The Topspin 360 is architected for full redundancy within a single box. Every component in the data path can be dual-connected from end to end. For example, a server with a 2-port HCA can be dual-attached to the two switch blades on the Topspin 360. Each gateway is also dual attached to the dual switch blades. In turn, the gateway modules are dual attached to Ethernet or Fibre Channel networks in pairs. With the addition of centralized load balancing and port aggregation, Ethernet and Fibre Channel uplink connections can be trunked and load balanced, allowing the Topspin 360 to reroute around failures. Each independently removable component is hot-swappable. [Figure 1-3](#) depicts the internal Topspin 360 architecture.

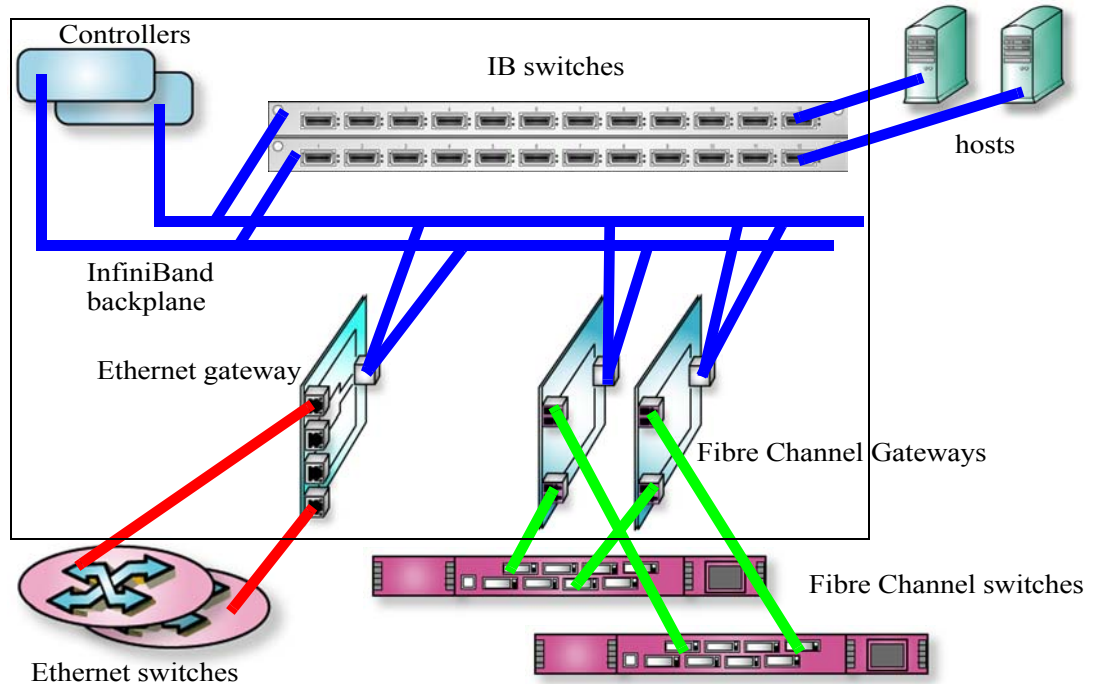


Figure 1-3: Fully Redundant System Architecture

The Topspin 360 can be used in a variety of networking environments, including database tiers, application tiers, and Web tiers. The Topspin 360 provides 10 Gbps connectivity to servers, 1 Gbps connectivity to Ethernet networks, and 2 Gbps connectivity to Fibre Channel networks. You can also aggregate uplinks for greater bandwidth and redundancy.

Scalability

You can populate the service end of the Topspin 360 with additional Fibre Channel gateways, Ethernet gateways, and InfiniBand switch cards to increase the port count of your Server Switch. A second IB switch card adds 12 InfiniBand ports. Each additional FC gateway adds 2 Fibre Channel ports, and each additional Ethernet gateway adds 4 or 6 Ethernet ports.

Topspin 360 Components

The following sections appear in this chapter:

- [“Introduction” on page 5](#)
- [“Controller Cards” on page 6](#)
- [“Ethernet and Fibre Channel Gateways” on page 9](#)
- [“InfiniBand Switch Cards” on page 10](#)
- [“Power Supply Modules” on page 13](#)
- [“Blower Trays” on page 15](#)

Introduction

The components of the Topspin 360 support the scalability and high availability of the Server Switch. The sections in this chapter discuss how to use, install, remove, and swap field-replaceable components to maximize the potential of your Topspin 360.

You can install the following components in your chassis:

- controller cards
- I/O gateways (Fibre Channel and Ethernet)
- InfiniBand switch cards
- power supplies
- blower modules



CAUTION: Never place your hand inside an empty card or module bay. You should never have cause to place a hand anywhere inside the Topspin 360 chassis. Unused card and module bays should always have a Topspin 360 blanking panel over the bay to ensure proper safety, ventilation, and cooling.

Controller Cards

Controller cards manage the Topspin 360 and provide Ethernet and Serial Console port access to the Server Switch. You can install controller cards in slots 1 and 14 of the Topspin 360. [Figure 2-1](#) displays the Topspin 360 controller card.



Figure 2-1: Topspin 360 Controller Card

The following points apply to the controller cards:

- Each Topspin 360 comes with one active controller and one warm standby controller.
- Upon power-up of the Topspin 360, slot 1 is the master (active). Slot 14 is the standby.
- The startup configuration file can be synchronized between the active and the standby controllers. The CLI prompts users to synchronize the controllers.
- When the master controller fails or reboots, the standby controller automatically takes over as the new master. All I/O cards (Switch cards, Fibre Channel gateways and Ethernet gateways) reboot when a failover occurs.
- Users can force a fail-over with the Element Manager GUI (**Maintenance > Reboot**) or command-line interface (**reload** command).
- The software upgrade/install process upgrades both the master controller and the standby controller at the same time. You do not need to upgrade them separately.
- A subnet manager runs on each controller card. The SM can manage a single Topspin 360 or redundant Topspin 360s.

Install a Controller Card

To install a controller card, perform the following steps:

1. Ground yourself appropriately.
2. Remove the blanking panel if one resides in the slot.

3. Remove the controller card from any packaging.
4. Extend the ejector lever on the card completely.
5. Insert the controller card module into slot 1 or slot 14 such that the ejector lever sits on the bottom-left-hand side of the module.
6. Push the controller card firmly into the slot. The ejector lever begins to close.

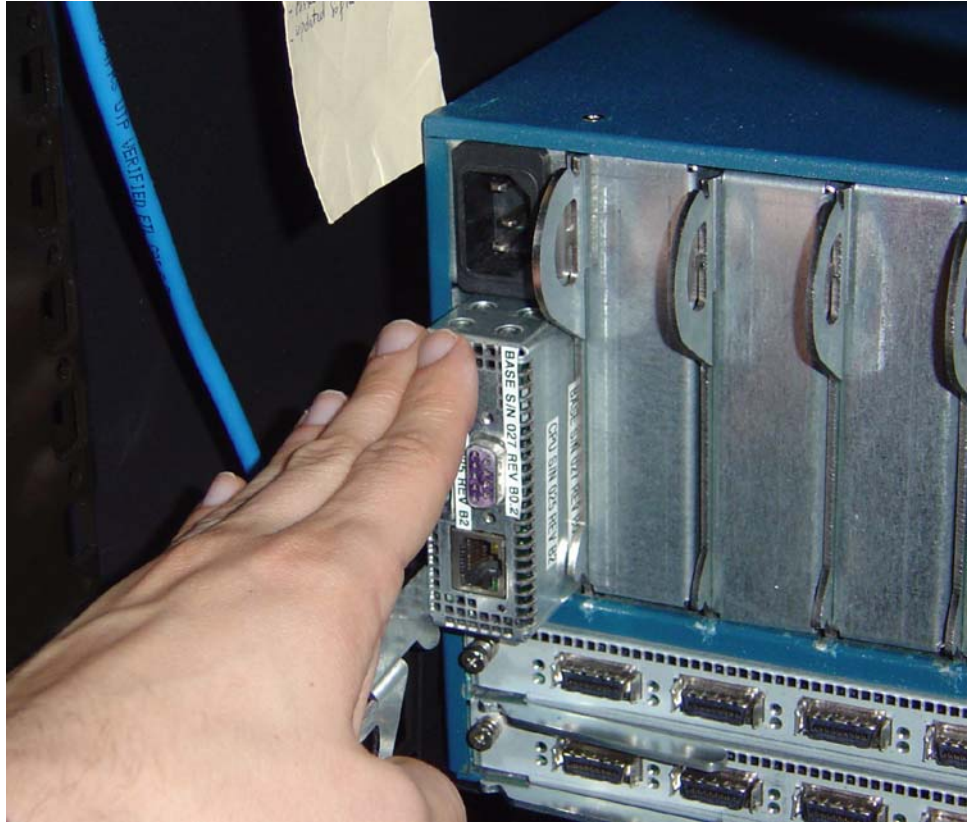


Figure 2-2: Inserting the Controller Card

7. Push the ejector lever up until it clicks into place.

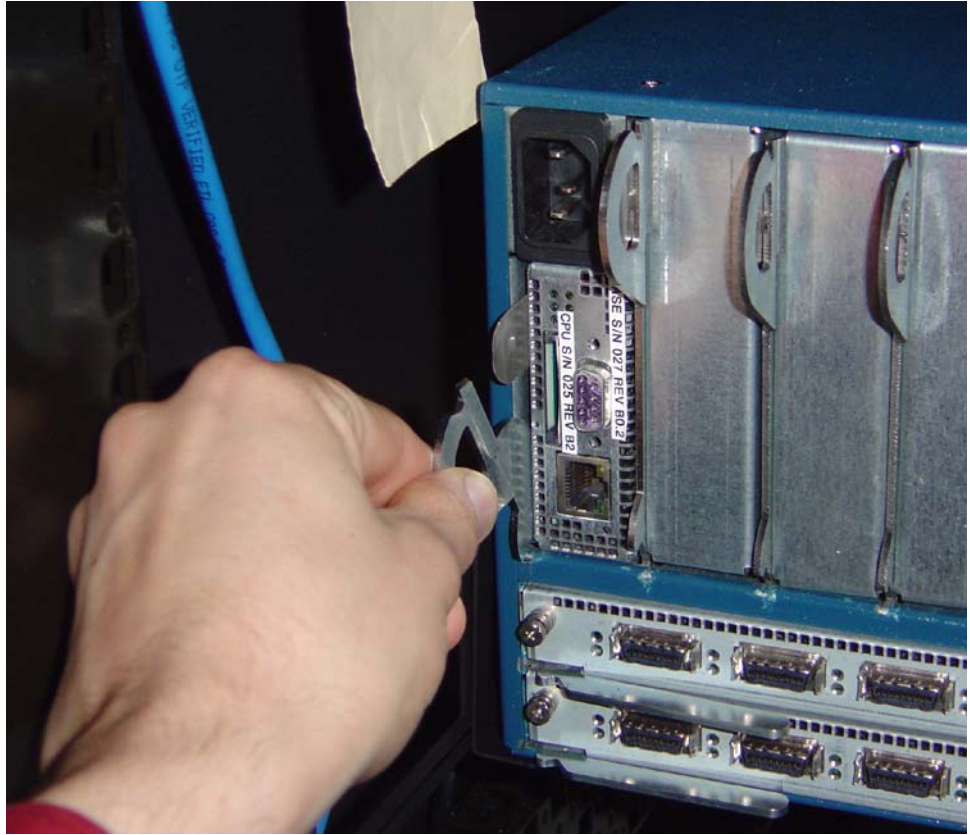


Figure 2-3: Closing the Ejector Lever

Ethernet and Fibre Channel Gateways

Topspin Ethernet and Fibre Channel gateways connect the Topspin 360, and IB-connected hosts, to IP and FC networks. All gateways are dual-connected to the redundant InfiniBand backplane of the Topspin 360. [Figure 2-4](#) displays an Ethernet gateway. [Figure 2-5](#) displays a Fibre Channel gateway.



Figure 2-4: Ethernet Gateway Expansion Module



Figure 2-5: Fibre Channel Expansion Module

Replacing and Updating Your Gateways

You can add, remove, and swap I/O gateways while your Topspin 360 runs. However, if the software image on your gateway does not match the software image that runs on your Server Switch, you must install the correct software on your gateway. For details, refer to the **install** command in the *Command Line Interface Reference Guide*.

Instructions on viewing the software image is described in [“Viewing and Updating the Software Image on the Chassis” on page 33](#). To update a single gateway, use the standard installation procedure, but do not reboot the chassis. You can simply enable and disable the individual gateway to activate the new software image.

Install an Ethernet or Fibre Channel Gateway

To install a gateway, perform the following steps:

1. Ground yourself appropriately.
2. Remove the blanking panel if one resides in the slot.
3. Remove the gateway module from any packaging.
4. Extend the ejector lever on the gateway completely.
5. Insert the gateway into an expansion module slot such that the ejector lever sits on the bottom-left-hand side of the module.



NOTE: You can install gateways in slots 2 - 13. Populate your Topspin 360 from left to right.

6. Push the gateway module firmly into the slot. The ejector lever begins to close.
7. Push the ejector lever up until it clicks into place.
8. Open a telnet session and login to the chassis, if you have not already done so.
9. View the primary software image version for all cards in the chassis, use the **show card-inventory** command. Look for the **primary-image-source** field for each slot. (The slots are described in [Figure 1-2](#).)

InfiniBand Switch Cards

InfiniBand switch cards connect the Topspin 360 to IB-attached hosts and other switches in the IB network. The Topspin 360 supports one or two InfiniBand switch cards. The 12-port InfiniBand switch card expansion module is shown in [Figure 2-6](#). The switch card provides

- 4x IB connections to each of the 12 gateway slots.
- 12 IB ports per switch card.

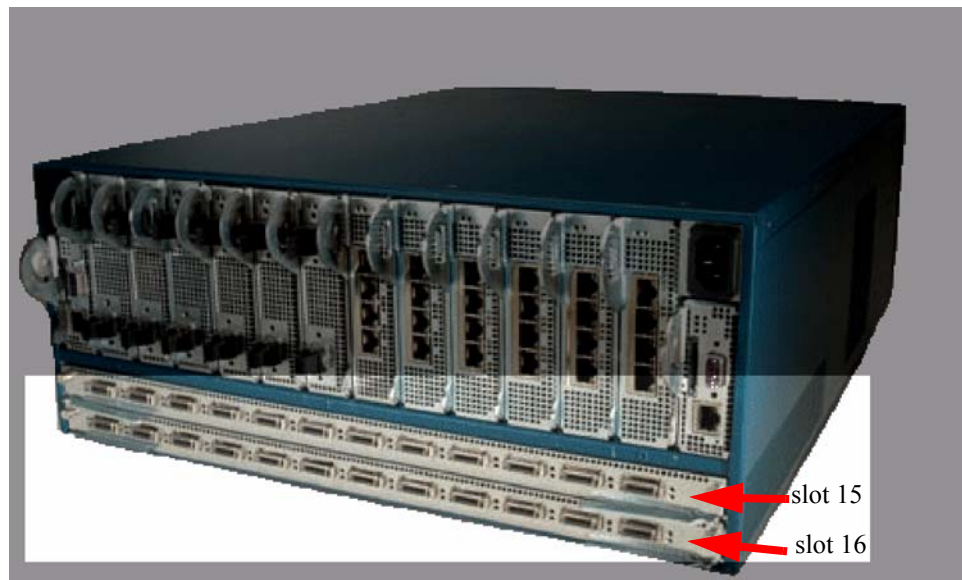


Figure 2-6: Topspin InfiniBand Switch Cards

Install InfiniBand Switch Cards

To install a switch card, perform the following steps:

1. Ground yourself appropriately.
2. Remove the blanking panel if one resides in the slot with a #1 Phillips-head screwdriver.
3. Remove the switch card from any packaging.
4. Extend the ejector levers on the left- and right-hand sides of the switch card completely.
5. Insert the switch card into slot 15 or slot 16 such that the ejector levers sit on the bottom of the switch card.
6. Press the switch card firmly into the slot so the fasteners begin to close.

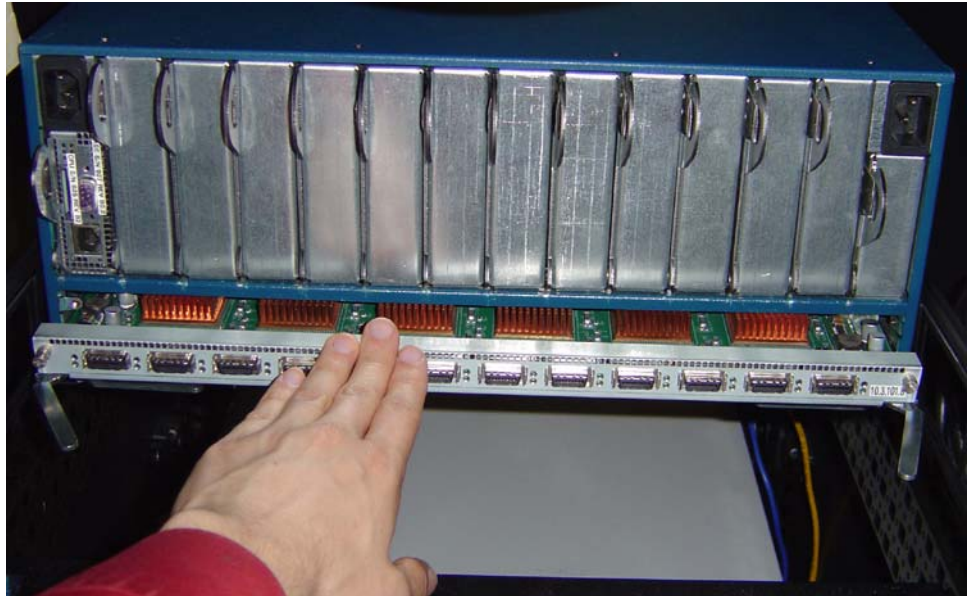


Figure 2-7: Inserting a Switch Card

7. Close both fastener-levers simultaneously and completely.



Figure 2-8: Closing Switch Ejector Levers

8. Tighten the screws on either side of the switch card to secure it to the chassis.



Figure 2-9: Securing Switch Card

Remove InfiniBand Switch Cards

To remove an InfiniBand switch card from the Topspin 360 chassis, perform the following steps:

1. Make sure the Topspin 360 chassis is secure.
2. If you are removing the InfiniBand card in slot 16 (the bottom card), you must power down the chassis before removing the card. The InfiniBand card in slot 16 is not hot-swappable.

The InfiniBand card in slot 15 is hot-swappable as long as there is a functional card installed in slot 16.

3. Properly ground yourself to avoid potential electrostatic discharge and damage to the card.
4. Facing the back of the Topspin 360 chassis, unfasten both screws on the InfiniBand switch card.

Do not attempt to remove the screws from the card. Just unscrew them until you are sure the card is no longer attached to the chassis.

5. Open both ejector levers simultaneously and pull the switch card toward you.
6. Install blanking panel into the empty chassis bay to ensure appropriate cooling.

Power Supply Modules

Power supply modules reside in slots on the left- and right-hand sides of the front (bezel end) of the Topspin 360. Redundant power supplies support hot swaps. When your Server Switch includes only one

power supply, you can add a second power supply while the chassis runs. If you have two power supplies installed, you can remove one of them without removing power from the chassis. Figure 2-10 displays the location of the power supplies in the Topspin 360.

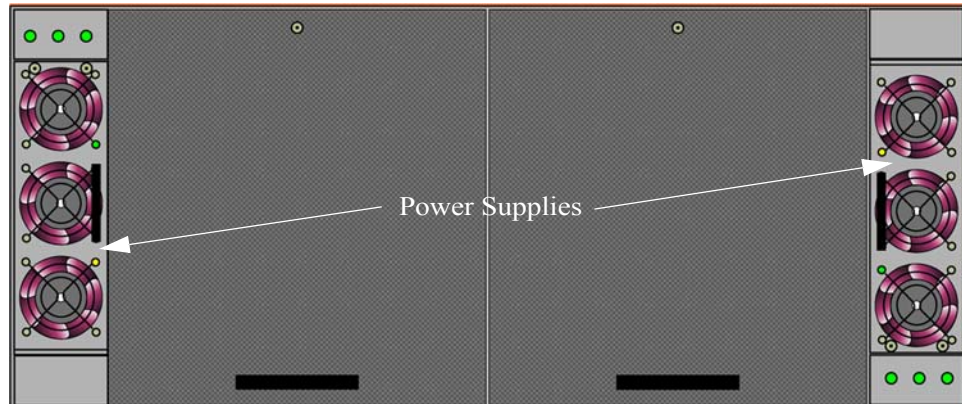


Figure 2-10: Power Supply Modules

Install Power Supply Modules

To insert a power supply, perform the following steps:

1. Ground yourself appropriately.
2. Remove the blanking panel if one resides in the slot.
3. Remove the power supply module from any packaging.
4. Insert the power supply into an open slot such that the pull handle sits close to the blower module.



NOTE: The power supplies should be inserted in opposite directions of each other.

5. Press the power supply firmly into the chassis.



NOTE: The power socket on the back (service end) of the Topspin 360 corresponds to the power supply module on the same side of the Server Switch.

Removing a Power Supply

To remove the power supply, perform the following steps:

1. Remove the power cord from the power supply.
2. Disengage the power supply by pulling it toward you.
3. Slide the power supply out of the chassis.
4. Fasten a blanking panel to the empty chassis bay to ensure appropriate cooling.

NOTE: The blanking panel is a flat sheet of metal with the same dimensions as the power module faceplate.

Blower Trays

The hot-swappable blower trays (fans) of your Topspin 360 maintain the internal temperature of your Server Switch. You do not need to turn off power to the chassis to replace a blower tray. Access the blower tray from the front (bezel end) of the Topspin 360 chassis. [Figure 2-11](#) displays the blower trays in the chassis.

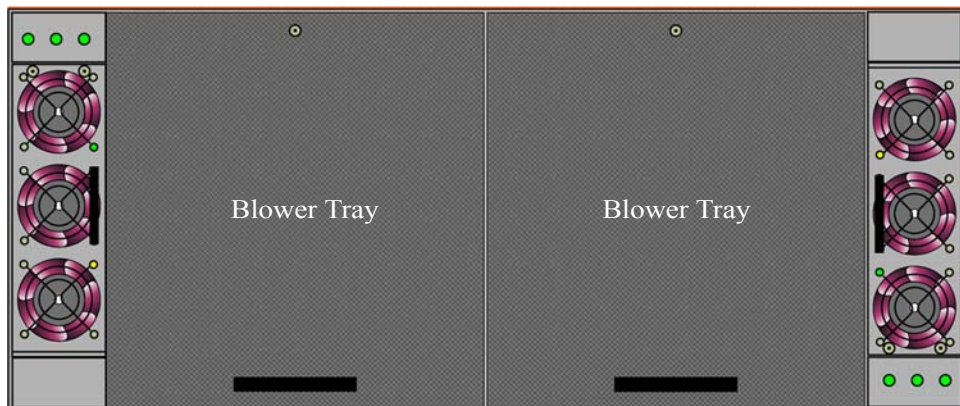


Figure 2-11: Blower Trays

NOTE: Your chassis requires two fully-functioning blower modules at all times.

Install Blower Trays

To insert a blower tray, perform the following steps:

1. Ground yourself appropriately.
2. Remove the blower tray from any packaging.

3. Insert the blower tray into an open slot until it is fully seated, such that the captive screw sits at the top of the tray.



4. Tighten the captive screw on the front panel to secure the tray to the chassis.



Removing Blower Trays

To remove a blower tray, perform the following steps:

1. Ground yourself appropriately.
2. Unfasten the captive screw.
3. Pull the fan toward you until it completely disengages from the chassis.

4. Insert a replacement blower tray into the empty chassis bay to ensure appropriate cooling.



NOTE: Each blower module contains two fans for a total of four fans. The system can tolerate one out of four blowers failing. When you remove a blower module, you have three minutes to replace it with a fully-functioning blower module.

Install and Boot the Topspin 360

The following sections appear in this chapter:

- [“Introduction” on page 19](#)
- [“Prepare the Site for the Topspin 360” on page 19](#)
- [“Install Topspin 360 Components” on page 20](#)
- [“Rack the Topspin 360” on page 20](#)
- [“Attach a Serial Console Cable to a PC or Terminal” on page 26](#)
- [“Boot your Topspin 360 and Configure Basic Connectivity” on page 27](#)
- [“Connect InfiniBand Hosts” on page 29](#)
- [“Manage the Topspin 360” on page 32](#)
- [“Viewing and Updating the Software Image on the Chassis” on page 33](#)

Introduction

The sections in this chapter explain how to mount your Topspin 360 in a rack, boot the Topspin 360, and configure basic services. For advanced configuration information, refer to the *Command Line Interface Reference Guide* or the *Element Manager User Guide*.

Prepare the Site for the Topspin 360

This section provides information that you need to safely and successfully prepare your environment for your Topspin 360. Read this section carefully before you install your device.

Read the Cautionary Statements

Refer to the [“FCC Statement”](#) on page vii and the [“Safety Information”](#) on page vii before you install your Topspin 360.

Prepare the Physical Environment for the Topspin 360

- Ground yourself using an approved ground wrist-strap.
- Make sure you have the right cables and sufficient ventilation.
- Unpack the Topspin 360 package.



CAUTION: Do not lift the Topspin 360 by the front and back (bezel end and service end). Lift the unit by the sides to prevent damage.

- Prepare a management workstation, such as a PC running terminal-emulation software, and a straight-through M/F DB-9 serial cable (included).

Install Topspin 360 Components

Install any gateway and switch card modules before you rack the Topspin 360, when possible. However, you may change modules while the Topspin 360 chassis is still in the rack.

For details regarding installing the switch cards, refer to [“Installing an InfiniBand Switch Card”](#) on page 42.

For details regarding installing power supplies and fans, refer to [“Installing a Power Supply”](#) on page 44 and [“Installing a Blower Tray”](#) on page 46.

For details regarding installing Fibre Channel gateways, refer to the *Fibre Channel Gateway User Guide*.

For details regarding installing Fibre Channel gateways, refer to the *Ethernet Gateway User Guide*.

Rack the Topspin 360

To mount the Topspin 360 in a rack, perform the following steps:

1. Open the Topspin box.
2. Remove the chassis, rack brackets, CD-ROM, parts bag, and documentation.



CAUTION: Do not lift the 360 chassis by the front (bezel end) and back (service end). Lift the unit by the sides to prevent damage.

3. Place the chassis on a secure, clean surface.
4. Open the plastic bag that contains the mounting hardware.
5. Verify that the rack provides sufficient clearance for the Topspin 360.
6. Loosen the nuts on the sides of the rack brackets, then adjust the length of your brackets to fit your rack. Tighten the bracket screws when the brackets fit the rack. You can extend the brackets to 29 inches or contract them to 24 inches.

7. Attach the side flanges to the sides of the chassis with the screws provided, as shown [Figure 3-1](#) and [Figure 3-2](#).

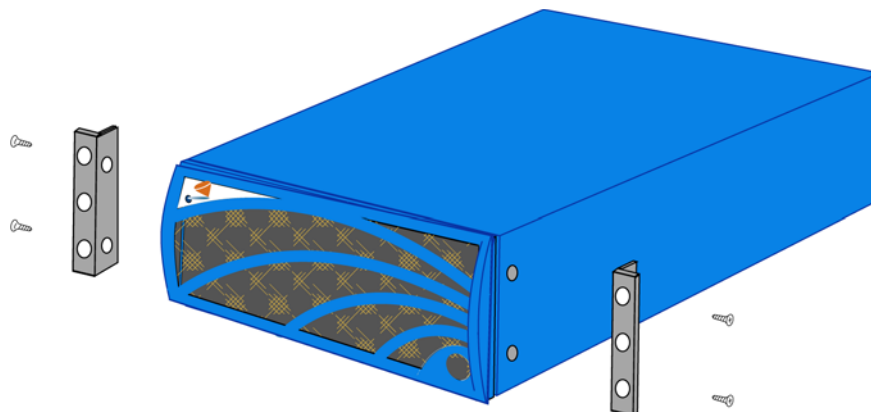


Figure 3-1: Positioning the Side Flanges



Figure 3-2: Fastening the Side Flanges

8. If necessary for your rack, add fasteners with appropriate threads to your rack to prepare your rack for the rails.

9. Position the chassis brackets to the rack rails, as shown in [Figure 3-3](#).

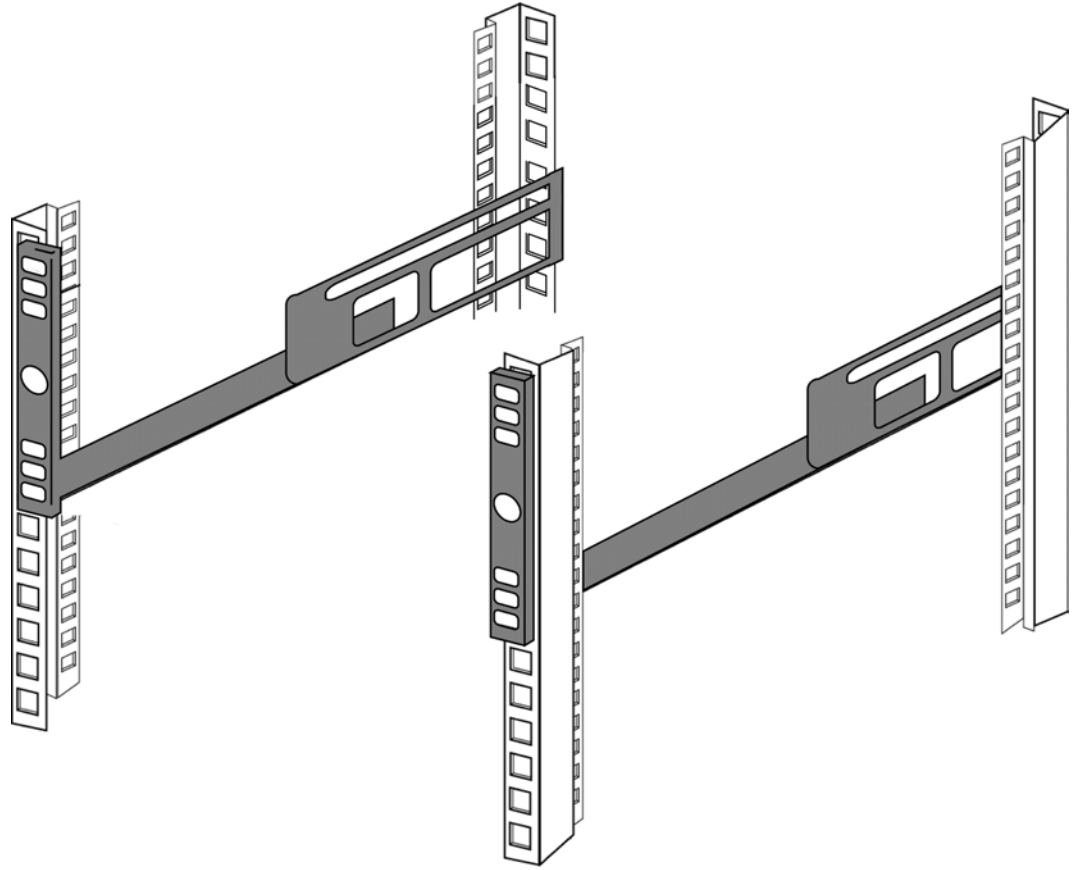


Figure 3-3: Rail Positioning

10. Screw the top and bottom of the front of the rails to the rack but *do not fully tighten the screws*. [Figure 3-4](#) displays the rail loosely connected to the rack.



NOTE: When you connect the rails, do not fully tighten the screws. When you slide the chassis into the rails, you may need to reposition the rails to align the flange screws with the rails.



Figure 3-4: Attaching Rails from the Front

11. Screw the top and bottom of the back of the rails to the rack, as shown in [Figure 3-5](#).

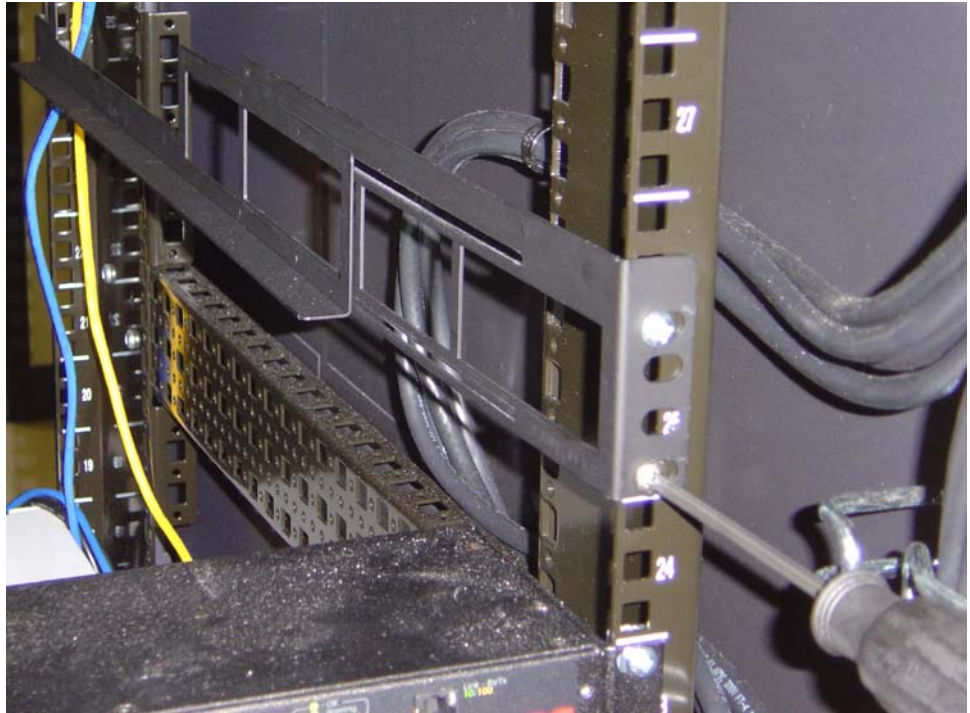


Figure 3-5: Attaching Rails from the Back

- Slide the Topspin 360 onto the rails as shown in [Figure 3-6](#) and [Figure 3-7](#).

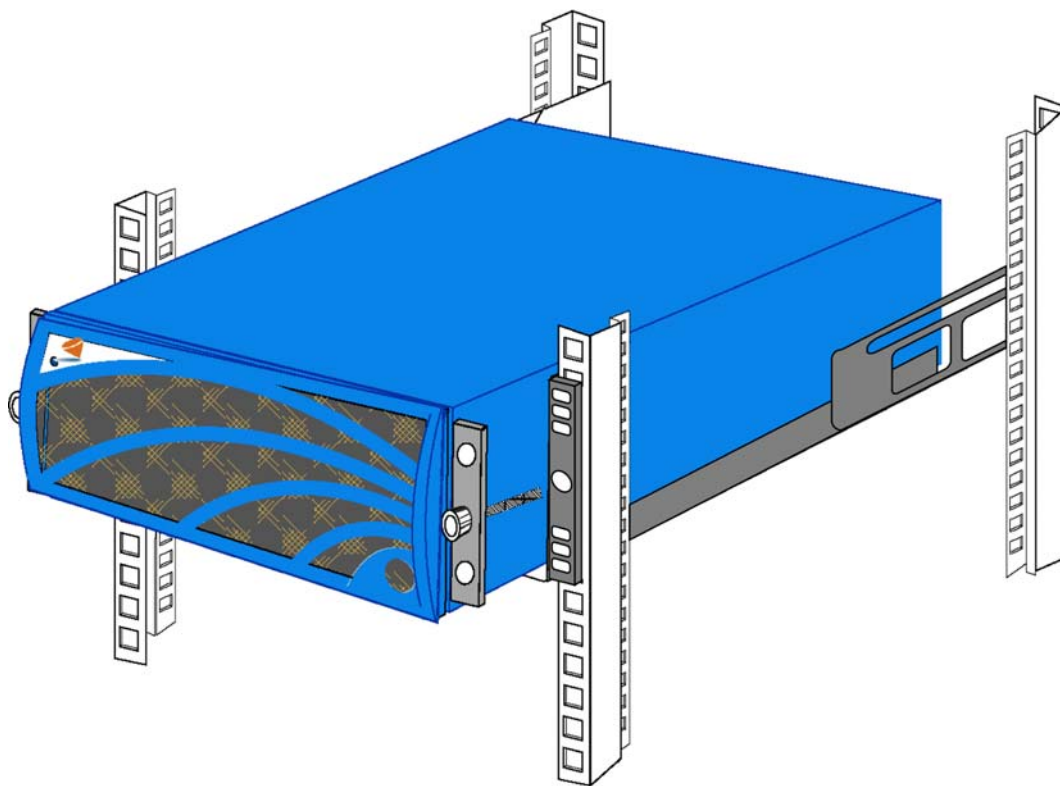


Figure 3-6: Positioning the Chassis on the Rails



Figure 3-7: Sliding the Chassis onto the Rails

13. Adjust the front of the rails (that you left loose in [step 10](#)) so that the threaded hole in the center of the front of the rail aligns with the screw in the flange.
14. Screw the flange screws tightly into the rails, as shown in [Figure 3-8](#).

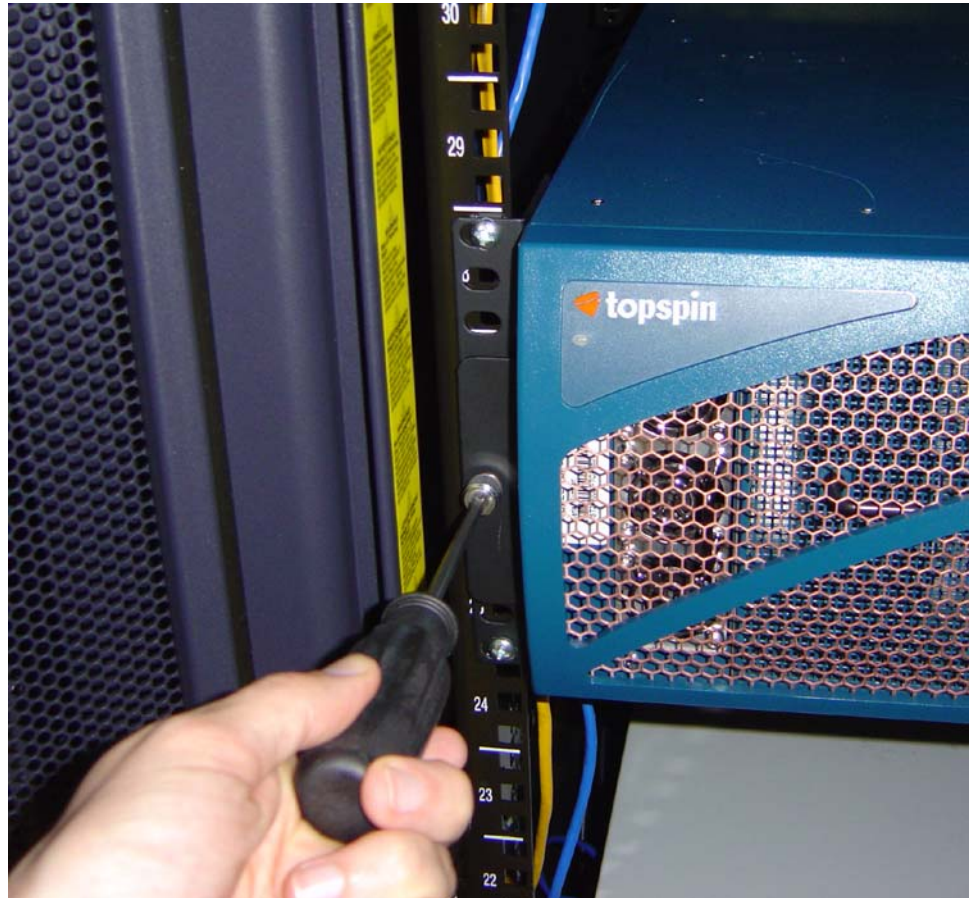


Figure 3-8: Securing the Chassis to the Rails

15. Firmly tighten the front rail screws.

For the VFrame Evaluation Test Plan, continue to [step b](#) of “[Hardware Installation Steps](#)” on [page 13](#) in the “[VFrame Evaluation Test Plan](#)”.

Attach a Serial Console Cable to a PC or Terminal

1. Connect the cable from the Topspin serial console to your terminal or management workstation. Use the straight-through M/F serial cable, which is provided in the Topspin package.



NOTE: For detailed information on how to connect the serial console cable, please see the documentation included with the serial cable kit.

2. Open a terminal emulation window using a program such as HyperTerminal for Windows. Set your terminal parameters to the following:
 - Baud: 9600 bps
 - Data Bits: 8
 - Parity: None

- Stop Bits: 1
- Flow control: None

For the VFrame Evaluation Test Plan, continue to [Step b](#) of “[Hardware Configuration Steps](#)” on page 14 in the “[VFrame Evaluation Test Plan](#)”.

Boot your Topspin 360 and Configure Basic Connectivity

To configure basic connectivity, you must power-on the Server Switch and configure it with the Serial Console port and a terminal or workstation. To configure basic Ethernet connectivity, you can apply a static IP address to the Topspin 360, or you can configure the chassis to obtain an IP address from a DHCP server.

To power-on and configure your Topspin 360, perform the following steps:

1. Use the serial cable (provided) to connect the serial console port of the Controller Card in slot one of your Topspin 360 to a terminal or to a workstation that runs terminal-emulation software.
2. Launch a terminal session with the following parameters:
 - Baud: 9600 bps
 - Data Bits: 8
 - Parity: None
 - Stop Bits: 1
 - Flow control: None
3. Connect a power cord to your Topspin 360, then plug the cord in to an appropriate power source. The Topspin 360 boots.
4. After the system boots, press the **Enter** key several times to display the CLI login prompt.

Example

```
Login:
```

5. Enter **super** as your user ID and password to log in as a user with administrative privileges.

Example

```
Login: super
Password: super
Topspin-360>
```

Assign a Static IP Address

To configure basic Ethernet connectivity, perform the following steps:

1. Enter the **enable** command.

Example

```
Topspin-360> enable
Topspin-360#
```

2. Enter the **configure** command.

Example

```
Topspin-360# configure
Topspin-360 (config) #
```

3. Enter the **interface mgmt-ethernet** command.

Example

```
Topspin-360 (config) # interface mgmt-ethernet
```

4. Enter the IP address of the management port followed by the net mask.

Example

```
Topspin-360 (config-if-mgmt-ethernet) # ip address 10.10.0.22 255.255.255.0
```

5. Set the default gateway of the management port.

Example

```
Topspin-360 (config-if-mgmt-ethernet) # gateway 10.10.0.1
```

6. Enable the management port with the **no shutdown** command. You can now telnet to your Topspin 360, or enter the IP address of your Topspin 360 in a Web browser to launch Chassis Manager.

Example

```
Topspin-360 (config-if-mgmt-ethernet) # no shutdown
```

7. Save the configuration to preserve it between reboots.

Example

```
Topspin-360 (config-if-mgmt-ethernet) # exit  
Topspin-360 (config) # exit  
Topspin-360# copy running-config startup-config
```

8. Attach an Ethernet cable from the management port to the Ethernet router or switch.
You are now ready to use the out-of-band Ethernet port to manage the system.

Obtain an IP Address with DHCP

1. Enter the **enable** command.

Example

```
Topspin-360> enable  
Topspin-360#
```

2. Enter the **configure** command.

Example

```
Topspin-360# configure  
Topspin-360 (config) #
```

3. Enter the **interface mgmt-ethernet** command.

Example

```
Topspin-360 (config) # interface mgmt-ethernet
```

4. Enter the IP address of the management port followed by the net mask.

Example

```
Topspin-360 (config-if-mgmt-ethernet) # addr-option dhcp
```

5. Enable the management port with the **no shutdown** command. You can now telnet to your Topspin 360, or enter the IP address of your Topspin 360 in a Web browser to launch Chassis Manager.

Example

```
Topspin-360 (config-if-mgmt-ethernet) # no shutdown
```

6. Save the configuration to preserve it between reboots.

Example

```
Topspin-360 (config-if-mgmt-ethernet) # exit  
Topspin-360 (config) # exit  
Topspin-360# copy running-config startup-config
```

For the VFrame Evaluation Test Plan, continue to [Step c](#) of “[Hardware Configuration Steps](#)” on page 14 in the “[VFrame Evaluation Test Plan](#)”.

Connect InfiniBand Hosts

This section describes a brief overview for connecting your InfiniBand hosts. For more detailed instructions, please see the *Host Channel Adapter Installation Guide*, which is included with your HCA(s).

Use InfiniBand cables to connect the HCA in your host to the InfiniBand switch card of your Topspin 360. To plug in an InfiniBand cable, push the connector into the interface until you hear/feel a click.



Figure 3-9: Fully Installed IB Cable with Pinch Connector



Figure 3-10: Fully Installed IB Cable with Pull Connector



NOTE: If your host does not provide an ample amount of free space around a given IB port, double-check that your IB cable connector engages fully. Wiggle your connector back and forth to be sure that both sides of the connector have locked firmly into place.

To remove a cable with a pinch connector, pinch both sides of the back of the connector and pull the connector away from the port.

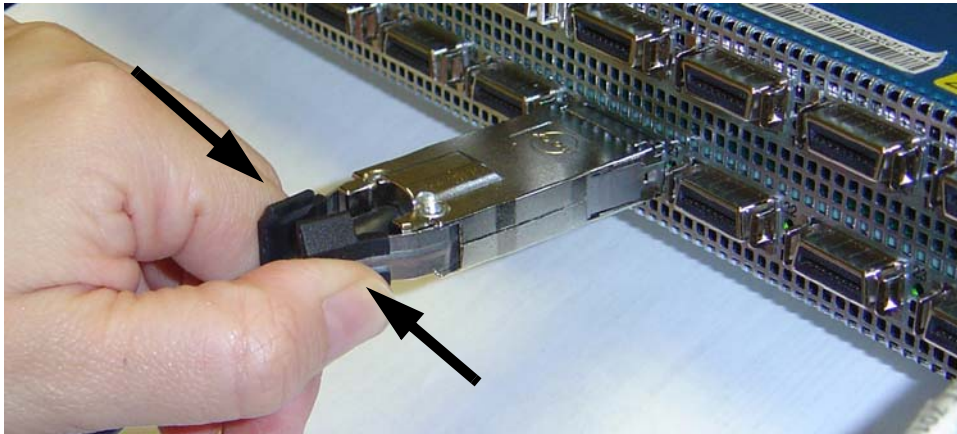


Figure 3-11: Removing a Pinch Connector

To remove a cable with a pull connector, grasp the connector with one hand and push it *toward* the port, then pull the latch away from the port with your other hand and gently wiggle the connector away from the port.

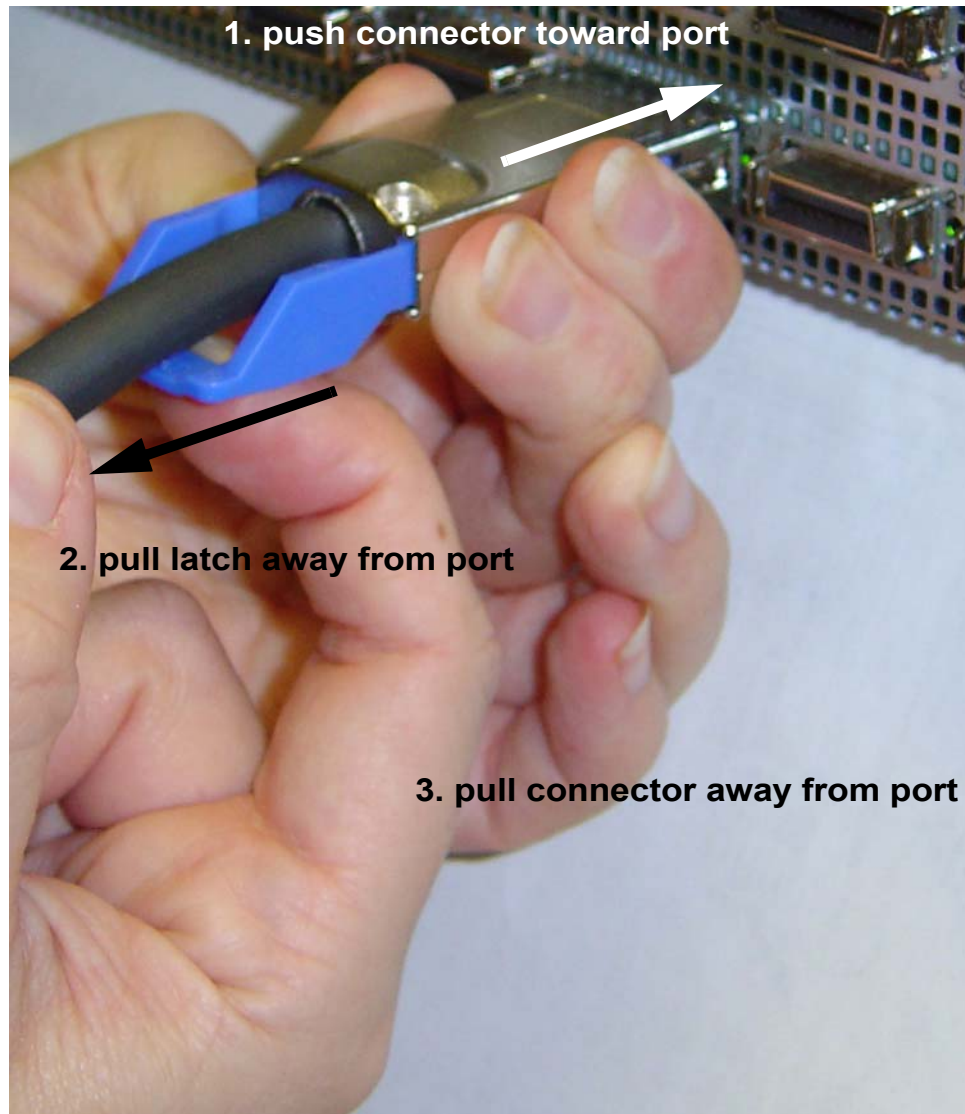


Figure 3-12: Removing a Pull Connector

Manage the Topspin 360

You can manage the Topspin 360 with the following methods:

- Command Line Interface (CLI) - a text-based interface accessible through a direct serial connection, Telnet over IP, or SSH over IP.
- Element Manager (GUI) - A graphical interface installed on a workstation, accessible over IP.
- Chassis Manager (GUI) - A graphical interface that you access with a Web browser.

Refer to the *Element Manager User Guide*, *Chassis Manager User Guide*, and the *CLI Reference Guide* for more information about managing the Topspin 360.

Viewing and Updating the Software Image on the Chassis

View the Software Image Version with the CLI

1. To view the primary software image version for all cards in the chassis, use the **show card-inventory** command. Look for the **primary-image-source** field for each slot. (The slots are described in [Figure 1-2](#).)
2. Note that it is possible to have different versions of software installed on different slots. To update an individual Fibre Channel or Ethernet Gateway, perform the steps as described here, but you do not need to reboot the chassis. After the copy and installation, you can enable and disable an individual gateway to activate the new image.

Example

```

Topspin-360# show card-inventory
=====
                        Card Resource/Inventory Information
=====
      slot-id : 1
      used-memory : 77040 (kbytes)
      free-memory : 50272 (kbytes)
      used-disk-space : 45048 (kbytes)
      free-disk-space : 57331 (kbytes)
      last-image-source : TopspinOS-2.0.0/build495
      primary-image-source : TopspinOS-2.0.0/build495
      image : TopspinOS-2.0.0/build495
      cpu-descr : PPC 440GP Rev. C - Rev 4.129 (pvr 4012 0481)
      fpga-firmware-rev : 6
      ib-firmware-rev : 200000000

      slot-id : 10
      used-memory : 47676 (kbytes)
      free-memory : 34948 (kbytes)
      used-disk-space : 8909 (kbytes)
      free-disk-space : 33361 (kbytes)
      last-image-source : TopspinOS-2.0.0/build495
      primary-image-source : TopspinOS-2.0.0/build495
      image : TopspinOS-2.0.0/build495
<output truncated>

```

3. To view all existing boot images that exist on the chassis (whether or not they are currently being used), use the **dir image** command.
 - A **.img** file is an image file that is not installed.

An installed image file will have a slash (/) in the name.

Example

```

Topspin-360> enable
Topspin-360# dir image
=====
Existing Boot-Images on System
=====
slot date-created size file-name
-----
1 Tue Nov 25 18:46:32 2003 30695264 Topspin360-TopspinOS-2.0.0-build212.img
1 Tue Nov 25 19:34:08 2003 19228160 TopspinOS-2.0.0/build211
1 Tue Nov 25 19:32:16 2003 15539200 TopspinOS-2.0.0/build212
Topspin-360#

```

View the Software Image Version with the GUI

Use the Element Manager GUI to view the software version(s) on the chassis:

1. Launch Element Manager.
2. Select **Maintenance > System Info** to view the version of software installed on the controller.

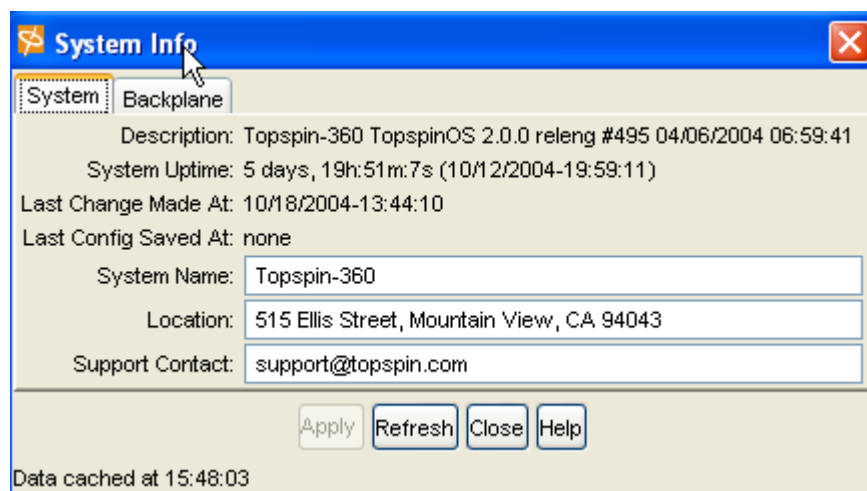


Figure 3-13: Software Image Version of the Controller Card

3. View the software version on individual cards in the chassis:
 - a. Double-click on any card in the main GUI.
 - b. Click the **Inventory** tab. The properties window appears for that card.

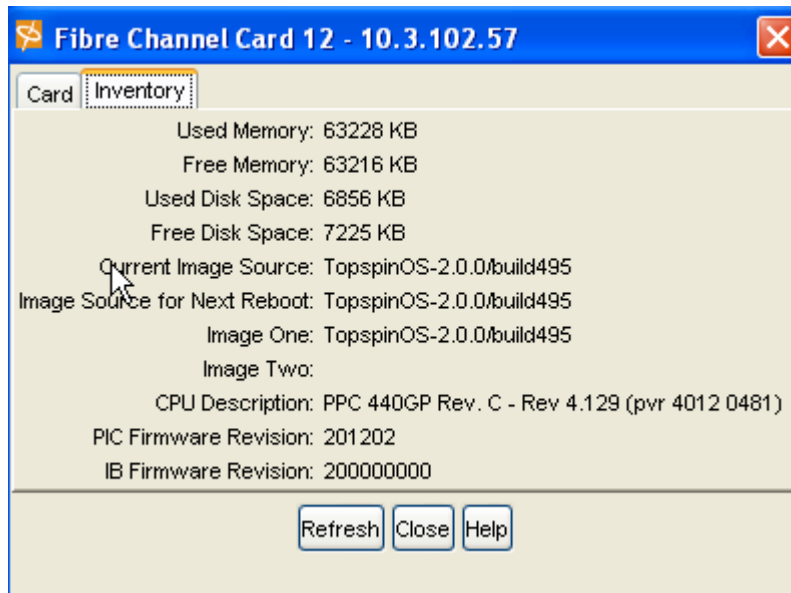


Figure 3-14: View Current Image of an Individual Card

- c. View the **Current Image Source** field. If you find a card that has a different image than the others, you can update a single card by re-installing the image on the chassis, but rebooting only the card that needs to be updated.

Upgrade the Software Image with the CLI

1. Copy the image to the chassis controller. To upgrade the version of software image for the switch, you need to copy the image to the switch. This can be done through the CLI using FTP and this **copy** command syntax:

copy ftp://<remote-login>:<remote-passwd>@<remote-system>/<filename>.img [<slot-number of the controller>:]image:<filename>.img

Example

```
Topspin-360# copy
ftp://bob:mypassword@10.0.0.5/Topspin-360-TopspinOS-2.1.0-build497.img
image:Topspin-360-2.1.0-build497.img
TopspinOS-2.1.0-build497.img
```

2. Activate the image. After downloading the image file to the chassis controller, it must be installed to become active. The **install** command installs the specified image file into the system.
 - a. In the privileged-execute mode, enter **install image:image-file-name.img**
 - Image files must have been copied into the image file-system
 - The file name must have the .img extension
 - All cards must have an oper-status of "Up"

Example

```
Topspin-360# install image:Topspin-360-TopspinOS-2.1.0-build497.img
*****operation completed successfully
```



NOTE: If you do not have enough available memory to install an additional image, delete an old image. [“Delete an Image with the CLI” on page 38.](#)

3. Specify the new boot image to be used.
 - a. Find the name of your new system image by entering the **dir image** command. Copy the name of the new image.
 - b. Enter **boot-config primary-image-source**, then paste the copied image file name.

Example

```
Topspin-360# configure
Topspin-360 (config)# boot-config primary-image-source TopspinOS-2.1.0/build497
Topspin-360 (config)# exit
```

4. Reboot the chassis. Note: You can also use the **card shutdown** and **card no shutdown** commands or the Element Manager GUI to reboot an individual card if you do not need to update the entire chassis.

Example

```
Topspin-360# reload
```

5. Save the system configuration. Click Yes when prompted.
6. Use the **show card-inventory** command to view the new primary image for all cards.

Upgrade the Software Image with the GUI

1. Launch the Element Manager GUI.
2. Select **Maintenance > File Management**. The **File Management** window appears.

3. Click the **Import** button. The **Import File** window appears.

Figure 3-15: Copy an Image File to the Switch

- a. Select **Image** from the **File Type** drop-down menu.
 - b. Click the **Remote FTP** radio button from the **Copy From** section.
 - c. Enter the name or IP address of the FTP server from which to copy the file in the **Server Name or IP Address** field.
 - d. Enter the network name of a recognized user in the **User Name** field.
 - e. Enter the password for the specified user in the **Password** field.
 - f. Enter the path and name of the image file on the FTP server in the **File Path and Name** field. Image file names must include the “.img” extension.
 - g. Enter the path from the ftp server from which you are copying the file in the **Copy To** field.
4. Click the **Copy** button to copy the file onto the controller of the switch. Wait until the transfer is complete. The window will automatically refresh to show the latest copied image file.
 5. Activate the image. After downloading the image file to the chassis controller, it must be installed to become active.

Prerequisites:

- The file name must have the .img extension

- All cards must have an oper-status of “Up”
- a. Click on the newly copied *.img* file in the **File Management** window.
 - b. Click the **Install** button.
 - c. Click **Yes** to the warning asking if you wish to proceed.



NOTE: If you do not have enough available memory to install an additional image, delete an old image. “[Delete an Image with the GUI](#)” on page 39.

6. Specify the new boot image to be used.
 - a. Select **Maintenance-> Boot Config...**The **Boot Configuration** window appears.

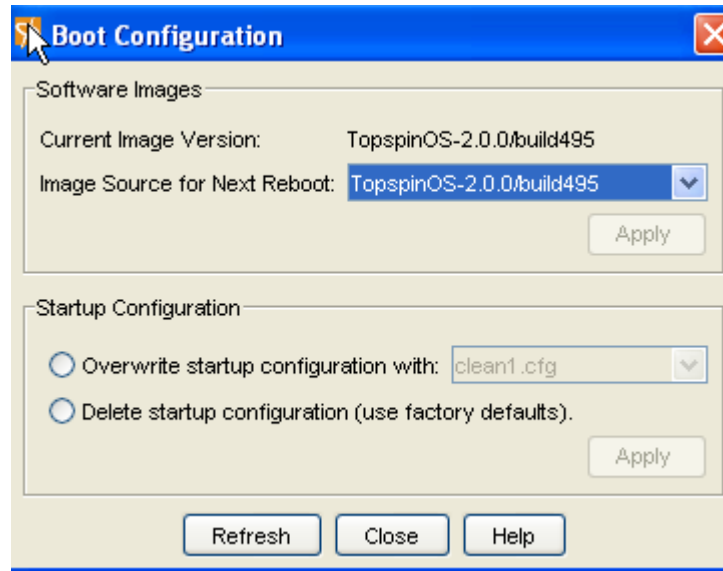


Figure 3-16: Specify the Boot Configuration

- b. Select the new boot image from the **Image Source for Next Reboot** drop-down menu.
 - c. Click the **Apply** button.
7. Reboot the chassis. Note: you can update the software on an individual gateway by enabling and disabling the gateway.
 - a. Select **Maintenance-> Boot Config...**
 - b. Click *yes* to in the **Save changes to the system configuration** dialog box.
 - c. Click **Ok** in the **The chassis will now be rebooted** dialog box.

Delete an Image with the CLI

You can delete an **.img** file through the CLI or the GUI. A **.img** file is an image file that is not installed. Do not delete an installed image file. An installed image will have a slash (/) in the name.

1. Delete an image (**.img** file) from the switch using the **delete** command with the following syntax:


```
delete [slot-number:]file-system:file
```


The following example deletes an image file from slot 1 (slots 1 and 14 can contain controller cards).

Example

```
Topspin-360# delete 1:image:Topspin360-TopspinOS-2.0.0-build488.img
Delete file 14:Topspin360-TopspinOS-2.0.0-build488.img? [yes(default) | no] yes
*****
```

Delete an Image with the GUI

You can delete an **.img** file through the GUI or the CLI. A **.img** file is an image file that is not installed. Do not delete an installed image file. An installed image will have a slash (/) in the name.

1. Select **Maintenance > File Management**.
2. Click on the **.img** file that you want to delete.

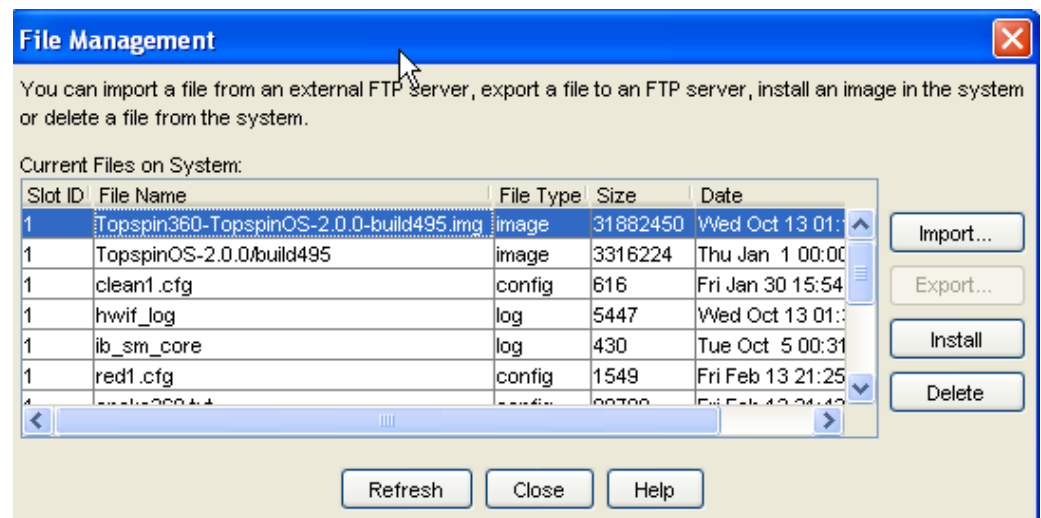


Figure 3-17: Delete an Image File

3. Click the **Delete** button.
4. Click **Yes** in the Delete image? dialog box.

Topspin 360 Field Replaceable Units

The following sections appear in this chapter:

- [“Controller Cards” on page 41](#)
- [“Expansion Modules” on page 41](#)
- [“InfiniBand Switch Cards” on page 42](#)
- [“Power Modules” on page 44](#)
- [“Replacing Blower Trays” on page 46](#)

Controller Cards

The Topspin 360 has two removable controllers, one on each side of the Server Switch.

Expansion Modules

When possible, expansion modules should be added before you rack the Topspin 360. However, expansion modules can also be added after the Server Switch has been racked.

Expansion modules refer to the following:

- Ethernet interface gateways
- Fibre Channel interface gateways

For steps for how to install and remove these FRUs, refer to [“Install Topspin 360 Components” on page 20](#).

InfiniBand Switch Cards

Each InfiniBand switch card is held in place by two screws, one on the left side and one on the right side of the card.

Installing an InfiniBand Switch Card

NOTE: Slot 16 must always have an Infiniband switch card inserted in order to maintain connectivity.

To install the InfiniBand switch card in the Topspin 360 chassis:

1. Remove the blanking panel from the switch card bay, if it is still in place.
2. Insert the switch card into an open slot.

During insertion, make sure the ejectors are perpendicular to the front panel.
3. Insert card until it is fully seated, and close the ejector levers.
4. Tighten the two captive panel screws on the front panel to secure the card to the chassis.



Figure 4-1: Removing an InfiniBand switch card (Topspin 360)

Configuring a New InfiniBand Switch Card

When an InfiniBand switch card is added to the chassis, the system does not dynamically discover the attributes of the new card. Perform the following steps after the initial installation:

1. Enter the **show card** command. You can follow the command with
 - An individual slot number (card#).
 - A range of slot numbers (in the form card#-card#).
 - A list of slot numbers in the form card#,card#,...(there are no spaces between elements in the list)

- The keyword **all** (The CLI defaults to “all” if you enter just “show card”).

Example

```
Topspin-360# show card 5,9,14,16
```

```
=====
                        Card Information
=====
```

slot	admin type	oper type	admin status	oper status	oper code
5	en4port1G	en4port1G	up	up	normal
9	fc2port2G	fc2port2G	up	up	normal
14	controller	controller	up	up	normal
16	ib12port4x	ib12port4x	up	up	normal

```
=====
                        Card Boot Information
=====
```

slot	boot stage	boot status	boot image
5	done	success	TopspinOS-1.1.2/build084
9	done	success	TopspinOS-1.1.2/build084
14	done	success	TopspinOS-1.1.2/build084
16	done	success	TopspinOS-1.1.2/build084

```
=====
                        Card Seeprom
=====
```


slot	product serial-number	pca serial-number	pca number	fru number
5	00024	1234	95-00007-01	1234
9	1234	1234	95-00008-01	1234
14	00002	00002	95-00005-01	1234
16	1234	1234	95-00006-01	1234

```
Topspin-360#
```

2. Update the switch card firmware. Enter the **install** command:

Example

```
Topspin-360# install image:Topspin-360-TopspinOS-2.0.0-build497.img
***** operation completed successfully
Topspin-360#
```

 **NOTE:** Only cards with an oper-status of “up” are updated. If a card is down when you run install, or a card is added after running install, bring up the card and run install again. Specify the same image file. If the image is already installed on a card, that card is skipped. Run boot-config again so that all cards know to boot off the same system image.

3. Reboot the switch card.

Example

```
Topspin-360# reload
System configuration has been modified. Save?
[yes(default)/no/*.cfg] yes
Proceed with reload? [confirm]
Topspin-360#
```

Removing an InfiniBand Switch Card

To remove an InfiniBand switch card from the Topspin 360 chassis:

1. Make sure the Topspin 360 chassis is secure.
2. Properly ground yourself to avoid potential electrostatic discharge and damage to the card.
3. Facing the back of the Topspin 360 chassis, unfasten both screws on the InfiniBand switch card.

Do not attempt to remove the screws from the card. Just unscrew them until you are sure the card is no longer attached to the chassis.

4. Open both ejector levers and pull the switch card toward you.
5. Install blanking panel into the empty chassis bay to ensure appropriate cooling.

Power Modules

Topspin 360 power supplies are hot-swappable. You can add a second power supply without powering off the chassis. If you have two power supplies installed, you can remove one of them without removing power from the chassis.

The power supplies are located on the front of the chassis. When facing the front, the power modules are located on right and center of the Topspin 360 chassis. To determine the power jack for each power module, orient the Topspin 360 chassis as shown in Figure 1-4 below. The power jack on the right supplies power to the module on the right and the power jack on the left supplies power to the module in the center.



NOTE: Never place your hand inside an empty card or module bay. You should never have cause to place a hand anywhere inside the Topspin 360 chassis. Unused card and module bays should always have a Topspin 360 blanking panel over the bay to ensure proper safety, ventilation, and cooling.

Installing a Power Supply

To insert a power supply, perform the following steps:

1. Remove the blanking panel, if it is still in place.
2. Insert the power supply into an open slot.



NOTE: The power supplies should be inserted in opposite directions of each other. See [Figure 4-2](#).

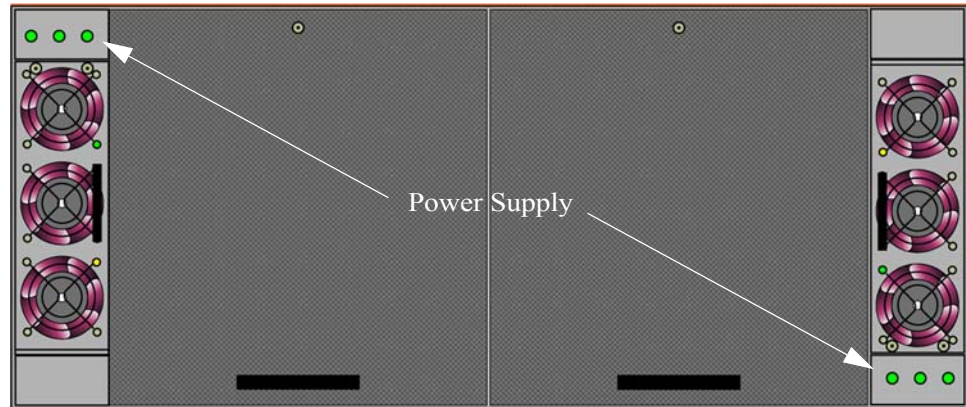


Figure 4-2: Power Supply Module Positioning

3. Press the power supply firmly into the chassis.



Removing a Power Supply

To remove the power supply, perform the following steps:

1. Remove the power cord from the power supply.
2. Disengage the power supply by pulling it toward you.
3. Slide the power supply out of the chassis.
4. Fasten a blanking panel to the empty chassis bay to ensure appropriate cooling.



NOTE: The blanking panel is a flat sheet of metal with the same dimensions as the power module faceplate.

Replacing Blower Trays

The Topspin 360 fan tray is hot-swappable. You do not need to turn off power to the chassis to replace the fan tray. Access the fan tray from the front of the Topspin 360 chassis.

Installing a Blower Tray

To insert a blower tray, perform the following steps:

1. If a blanking panel is already attached to the module bay, remove it.
2. Insert the blower tray into an open slot until it is fully seated.



3. Tighten the two captive panel screws on the front panel to secure the card to the chassis.



Removing a Blower Tray

To remove a blower tray, perform the following steps:

1. Unfasten the fan tray screws.
2. Pull the fan toward you until it completely disengages from the chassis.
3. Fasten a blanking panel to the empty chassis bay to ensure appropriate cooling.

The blanking panel is a flat sheet of metal with the same dimensions as the fan tray faceplate. It is fastened in the same way as a fan module.



NOTE: Each fan module contains three fans for a total of six fans. The system requires at least two fans to remain operational. In the event that one fan module fails, or you want to hot-swap the module, it must be replaced within three minutes.

Topspin 360 LEDs

The following sections appear in this chapter:

- [“Introduction” on page 49](#)
- [“Topspin 360 System LED” on page 50](#)
- [“Power Supply LEDs” on page 51](#)
- [“Blower Tray LEDs” on page 52](#)
- [“Controller Card LEDs” on page 53](#)
- [“IB Switch Card LEDs” on page 54](#)
- [“IB Port LEDs” on page 54](#)
- [“Fibre Channel Gateway LEDs” on page 55](#)
- [“FC Port LEDs” on page 55](#)
- [“Ethernet Gateway LEDs” on page 56](#)
- [“Ethernet Port LEDs” on page 56](#)

Introduction

LEDs on your Topspin 360 and installed components indicate hardware status. The sections in this chapter explain the LED indications for the chassis and the components in the chassis.

LED indicators appear on the following components:

- power supplies
- blowers
- controller cards
- InfiniBand cards
- Fibre Channel cards

- Ethernet cards
- Topspin 360 bezel side

The LEDs have special significance depending on the chassis component. This section describes the LED indicators of each component

Topspin 360 System LED

The Topspin 360 system LED appears on the top-left-hand corner of the front (bezel end) of the Server Switch. You can view the system LED with the bezel on or off. [Table 5-1](#) describes system LED indications.

Table 5-1: System Status LED Indications

Activity	Indication
solid green	Chassis runs with no errors.
solid yellow	A module on the chassis has failed.
off	No system power.

Power Supply LEDs

Power supply status LEDs are located on either side of the power supply module pull handle. Controller cards mirror Power Supply LEDs on the service end of the chassis. [Figure 5-1](#) displays power supply LEDs.

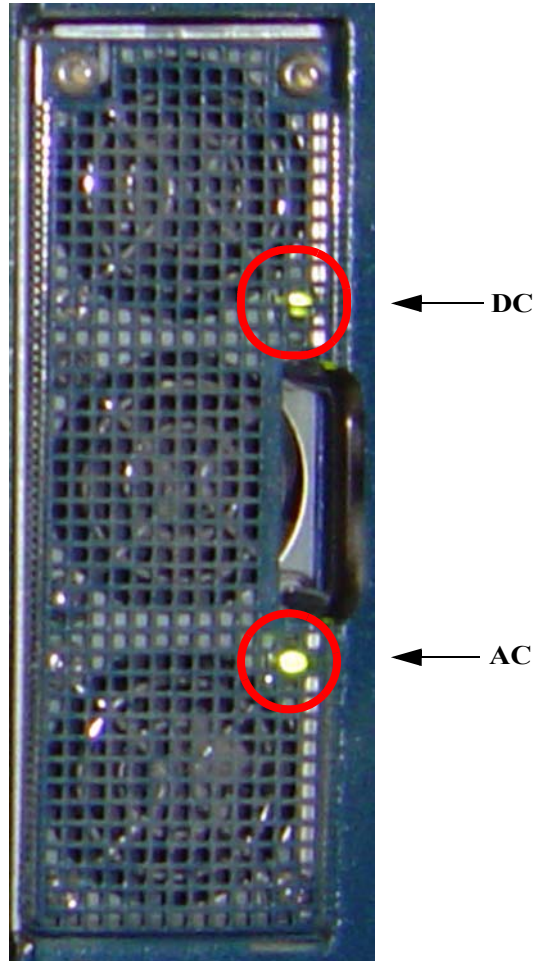


Figure 5-1: Power Supply LEDs

[Table 5-2](#) displays AC LED indications.

Table 5-2: AC Power Supply LED

Activity	Indication
solid green	AC input present.
off	AC input absent.

[Table 5-3](#) displays DC LED indications.

Table 5-3: DC Power Supply LED

Activity	Indication
solid green	DC outputs from the power supply fall within regulated limits.
off	DC outputs from the power supply exceed limits.

Blower Tray LEDs

Blower tray LEDs appear immediately to the left of the System LED on the bezel end of the Topspin 360. Each blower LED is a dual-color green/yellow LED. Controller Cards mirror the blower LEDs. [Figure 5-2](#) displays the blower LEDs.

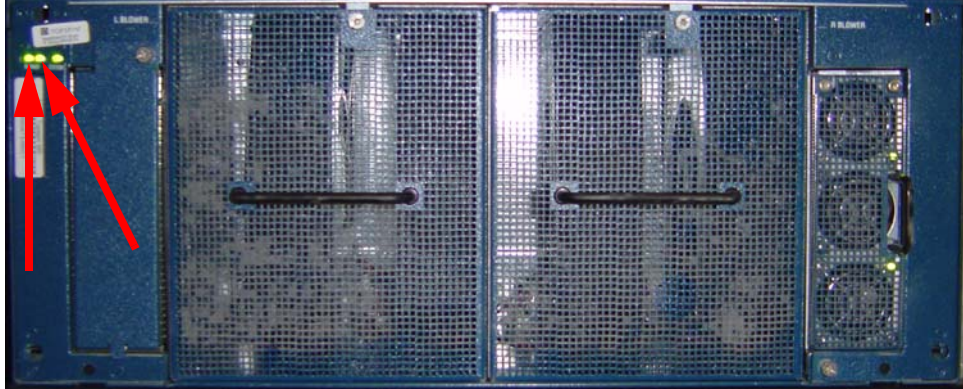


Figure 5-2: Blower Tray LEDs

[Table 5-4](#) explains blower tray LED indications.

Table 5-4: Blower LED Indications

Activity	Indication
solid green	Blower runs with no errors.
solid yellow	A blower has failed.
off	No system power.

Controller Card LEDs

Controller cards include card status LEDs as well as Management Ethernet port LEDs. The top-left-most LED represents the controller card in slot 1, and the top-right-most LED represents the controller card in port 14. [Figure 5-3](#) displays the LEDs on the controller card.

Controller Card 1 Status LED

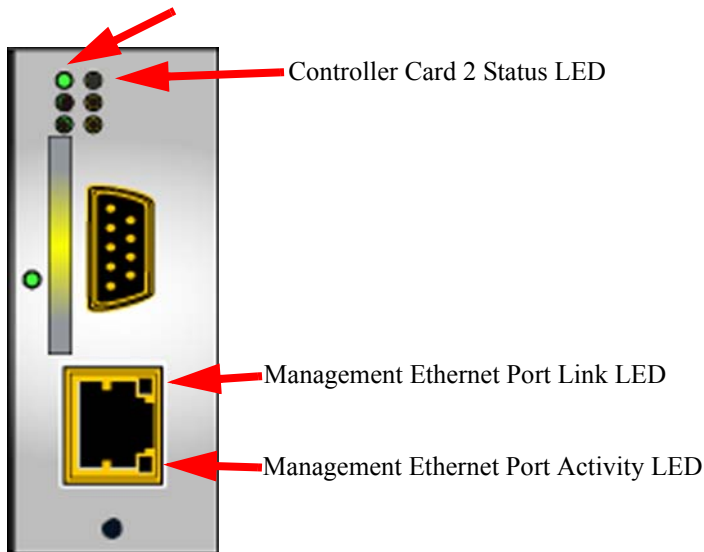


Figure 5-3: Controller Card LEDs

NOTE: The LEDs immediately below the controller card status LEDs are not currently supported.

[Table 5-5](#) explains Controller Card LED indications.

Table 5-5: Controller Card LED Indications

LED State	Indication
off	No power to the controller card.
solid green	Controller card runs with no errors.
solid yellow	Controller card problem that requires user intervention.

[Table 5-6](#) explains Management Ethernet port LED indications.

Table 5-6: Management Ethernet LED Indications

LED State	Indication
Link LED off	No physical link.
Link LED solid	Successful physical link.
Port Activity LED off	No logical link.
Port Activity LED blinking	Traffic runs over the port.
Port Activity LED solid	Logical link established but traffic does not yet run.

IB Switch Card LEDs

Each InfiniBand switch card includes two LEDs (one green and one yellow) at one side of the interface-end of the card. [Figure 5-4](#) displays the IB switch card LEDs.



Figure 5-4: InfiniBand Switch Card LEDs

[Table 5-7](#) explains IB switch card LED indications.

Table 5-7: InfiniBand Switch Card LED Indications

LED State	Indication
green off, yellow off	No power to the switch card.
green solid, yellow off	Switch card runs with no errors.
yellow solid, green off	Switch card problem that requires user intervention.

IB Port LEDs

Two port LEDs (both green) appear next to each IB port on the switch card. [Figure 5-5](#) displays the InfiniBand interface LEDs.

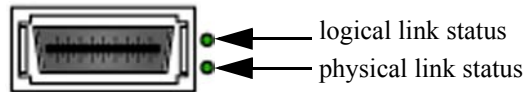


Figure 5-5: The InfiniBand interface LEDs

Both the top and bottom InfiniBand port LEDs are solid green. The top LED indicates a logical link has taken place. (A logical link is established when the subnet manager makes a sweep. A logical link must be established if you are to use the port.) The bottom LED indicates a physical link has occurred. (A physical link requires that the drivers on the attached InfiniBand host have been installed and are running).

[Table 5-8](#) explains IB port LED indications.

Table 5-8: Management Ethernet LED Indications

LED State	Indication
bottom LED off	No Rx-Character detected.
bottom LED on	Valid Rx-Character detected.
bottom LED on, top LED on	Link is OK.
bottom LED on, top LED on	Logical link error.

Fibre Channel Gateway LEDs

The FC gateway provides one yellow (amber) LED and one green LED. [Table 5-9](#) lists and describes the LED indications.

Table 5-9: Gateway LED Indications

Display	Indication
yellow on, green off	Auxiliary power has reached the gateway.
green on, yellow off	Gateway runs successfully.
green on and yellow on	An error has occurred

FC Port LEDs

Fibre Channel Port LEDs are adjacent to each FC port. They indicate port status and activity. Each port has a one bi-color, green/yellow, LED to indicate port status. When you enable a Fibre Channel interface card, and a Fibre Channel device is already connected, the run light (LED) of the Fibre Channel interface port changes from yellow to green, indicating that a connection has been established between the Fibre Channel device and the port.

[Figure 5-6](#) displays the FC LEDs.

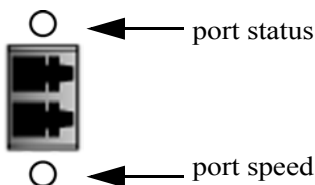


Figure 5-6: The Fibre Channel interface LEDs

[Table 5-10](#) explains the FC port status LED.

Table 5-10: Interpreting the Fibre Channel Port-Status LEDs

Led	Description
off	Optic module or cable is not attached.
solid yellow	A cable is attached but the port is offline.
slow pulsing yellow (2 second intervals)	Port is disabled, and fiber installed as the result of diagnostics or Fibre Channel portDisable command.
fast pulsing yellow (half-second intervals)	Signal detected but port fault is also detected.
solid green	The port is online and a signal is detected.
slow pulsing green (2 second intervals)	The port is online with a loop-back cable attached or an incompatible device.
fast pulsing green (half-second intervals)	The port is online but running some internal diagnostics.
sporadic flickering green	The port is online and packet traffic is detected.

[Table 5-11](#) explains the FC port activity LED.

Table 5-11: Interpreting the Fibre Channel Port Activity LEDs

Color	Description
off	No system power or LED failure.
solid yellow	Fan error detected. Operator intervention required.
solid green	Fans running with no detected errors.

Ethernet Gateway LEDs

The Ethernet gateway provides one yellow (amber) LED and one green LED. [Table 5-12](#) lists and describes the LED indications.

Ethernet Port LEDs

Table 5-12: Gateway LED Indications

Display	Indication
yellow on, green off	Auxiliary power has reached the gateway.
green on, yellow off	Gateway runs successfully.
green on and yellow on	An error has occurred

Ethernet port LEDs appear on the Ethernet ports. [Figure 5-7](#) displays the Ethernet interface LEDs.

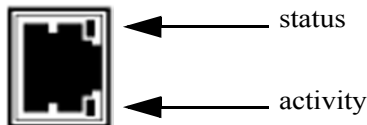


Figure 5-7: Ethernet Interface LEDs

[Table 5-13](#) explains Ethernet port LED indications.

Table 5-13: Ethernet Port LED Indications

LED State	Indication
Status LED off	No physical link.
Status LED solid	Successful physical link.
Activity LED off	No logical link.
Activity LED blinking	Traffic runs over the port.
Activity LED solid	Logical link established but traffic does not yet run.

Specifications and Compliance

This chapter details the Topspin 360 specifications and compliance certifications.

General Specifications

Table 6-1: General Specifications

Specification	Detail
Operating Temperature Range	0 to 35C
Non-Operating Temperature Range	-40 to 65 degrees Celsius
Operating Temperature Gradient	20C maximum per 60 min
Operating Altitude	0 - 10,000 ft
Non-Operating Alt.	0 - 35,000 ft
Operating Humidity Range	20 to 80%, Non-condensing
Non-Operating Humidity Ranges	5 to 95%, Non-condensing
Operating Humidity Gradient	Maximum per 60 min: 10%
Non-Operating Humidity Gradient	0.1, maximum per 60 min
Operating Shock	5G, 11ms half-sine wave
Non-Operating Shock	10G, 11ms half-sine wave
Operating Vibration, Sinusoidal	5G, 5 to 300Hz, 15 minute dwell

Table 6-1: General Specifications

Specification	Detail
Non-Operating Vibration, Sinusoidal	3 axis with the following parameters <ul style="list-style-type: none"> • “X and Y axis: 0.0004 G² / Hz flat from 5-500Hz (0.472 GRMS) • Z-axis: 0.0008 G² / Hz flat from 5-500Hz (0.629GRMS)
Weight	< 95 pounds, fully configured
Management Interfaces	<ul style="list-style-type: none"> • Console RS-232, DB-9 connector • Management: 10/100 Ethernet RJ-45

Electrical Specifications

Table 6-2: Electrical Specifications

Category	Specification
AC Power	Auto-ranging 90-264VAC, 47-63Hz. Dual independent IEC connectors, left and right justified.
Power Dissipation	< 650 W maximum

Certifications/Regulatory

Table 6-3: Certifications/Regulatory

Certifications
<p>EMC: Class A Radiated and Conducted Emissions per FCC Part 15, subpart B (USA) and ICES-003 (Canada)</p> <p>Safety: UL60950, 3rd ed. (USA) and CSA 22.2 No. 60950:2000 (Canada)</p>
<p>EMC: Class A Radiated and Conducted Emissions per EN 55022, Harmonics and Flicker tests per EN 61000-3-2,3 and Radiated and Conducted Immunity tests per EN 55024</p> <p>Safety: EN60950 Declaration of Conformity to EN60950, EN55022, and EN55024 plus the CE mark on the device.</p>
<p>EMC: Class A Radiated and Conducted Emissions per VCCI V-3/02.04</p>

Laser Specs

Table 6-4: Laser Specifications

Topspin P/N	Application	Optical Parameters
48-00001-01	Fibre Channel	<p>*CDRH/IEC Laser Class: I/1</p> <p>Maximum Data rate: 2.125GB/s</p> <p>Wavelength: 850 nm</p> <p>I/O connector:</p>

Table 6-4: Laser Specifications

Topspin P/N	Application	Optical Parameters
*Standards used: CDRH - 21CFR Chapter I§ 1040.10; IEC - IEC60825-1:1994		

Index

A

architecture2

B

basic connectivity27

C

configure basic connectivity27

connectivity, basic27

controller, installing & removing41

H

high availability3

I

InfiniBand switch cards, installing & removing ...42

installing the chassis in a rack20

P

performance2

product registration xi

R

racking the chassis20

redundancy3

registration instructions xi

S

safety information vii

system architecture2

T

transparent topology2